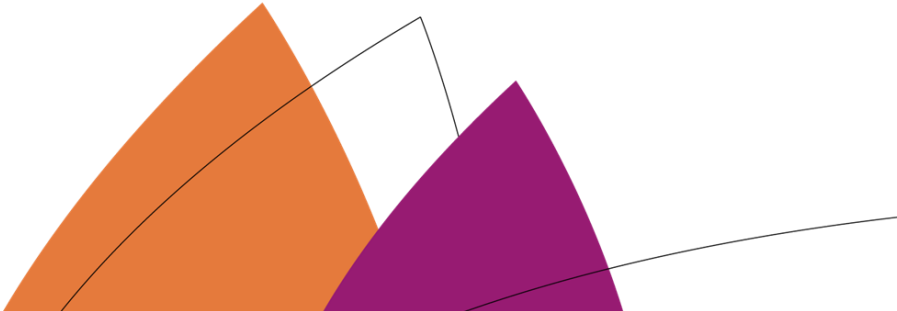




# CAAC Design and Construction Update

4-20-2023



# 2022 Projects

## New Buildings & Additions

# Ralston Valley HS 10 Additional Classrooms EUA - Himmelman



# Ralston Valley HS 10 Additional Classrooms EUA - Himmelman



Efficiency Future Ready  
Windy Peak OEL  
HCM – Bryan

Construction



Efficiency Future Ready  
Windy Peak OEL  
HCM – Bryan

Construction



# Efficiency Future Ready Mount Blue Sky OEL

Construction

HCM – GH Phipps



Efficiency Future Ready  
Mount Blue Sky OEL  
HCM – GH Phipps

Construction





# DW LED 2022

## Ackerman – CMGC McKinstry



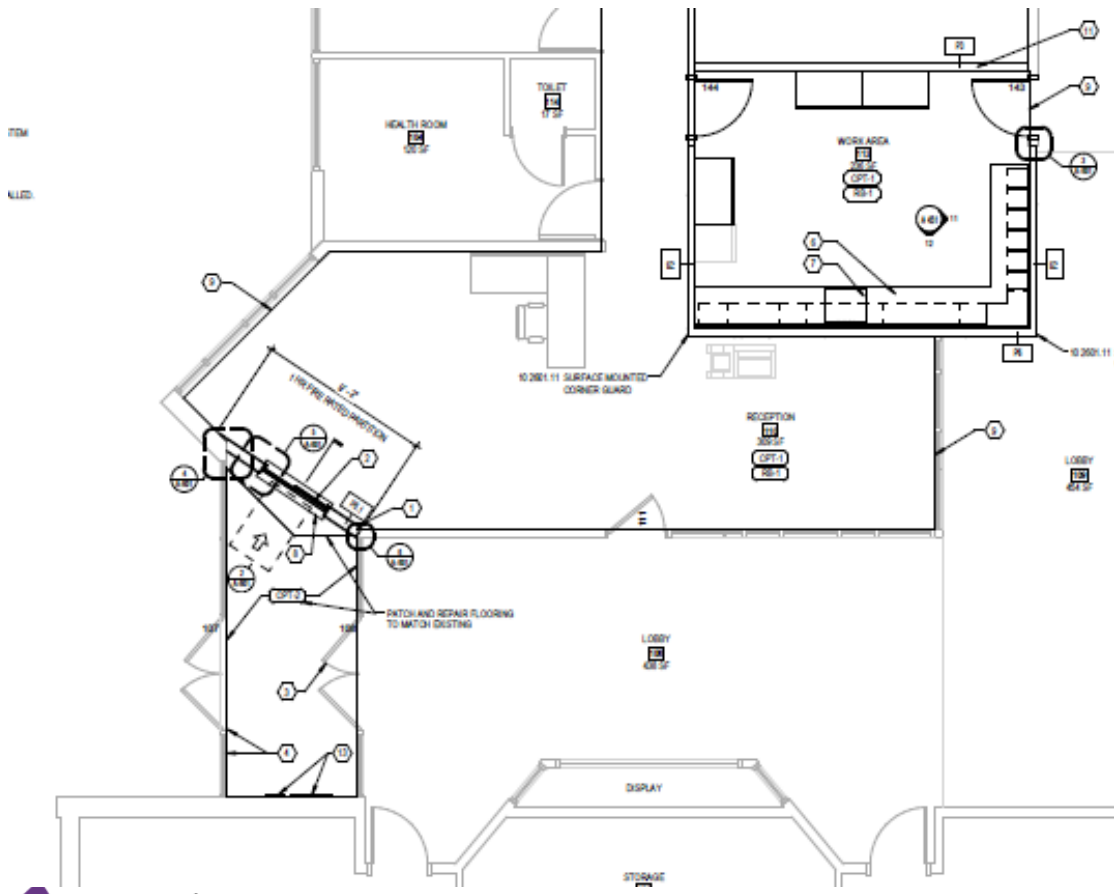
## Construction

1. Brady
2. Bradford North
3. Bradford South
4. Ute Meadows ES
5. Leawood ES
6. Normandy ES
7. Rooney Ranch ES
8. Creighton MS
9. Mandalay MS
10. Deer Creek MS
11. Lawrence
12. Weber ES
13. Meiklejohn
14. West Woods
15. Chatfield HS
16. Dakota Ridge HS

# 2023 Efficiency Future Ready & DW projects

# Ute Meadows ES – Efficiency Future Ready MOA – Crossland

Construction



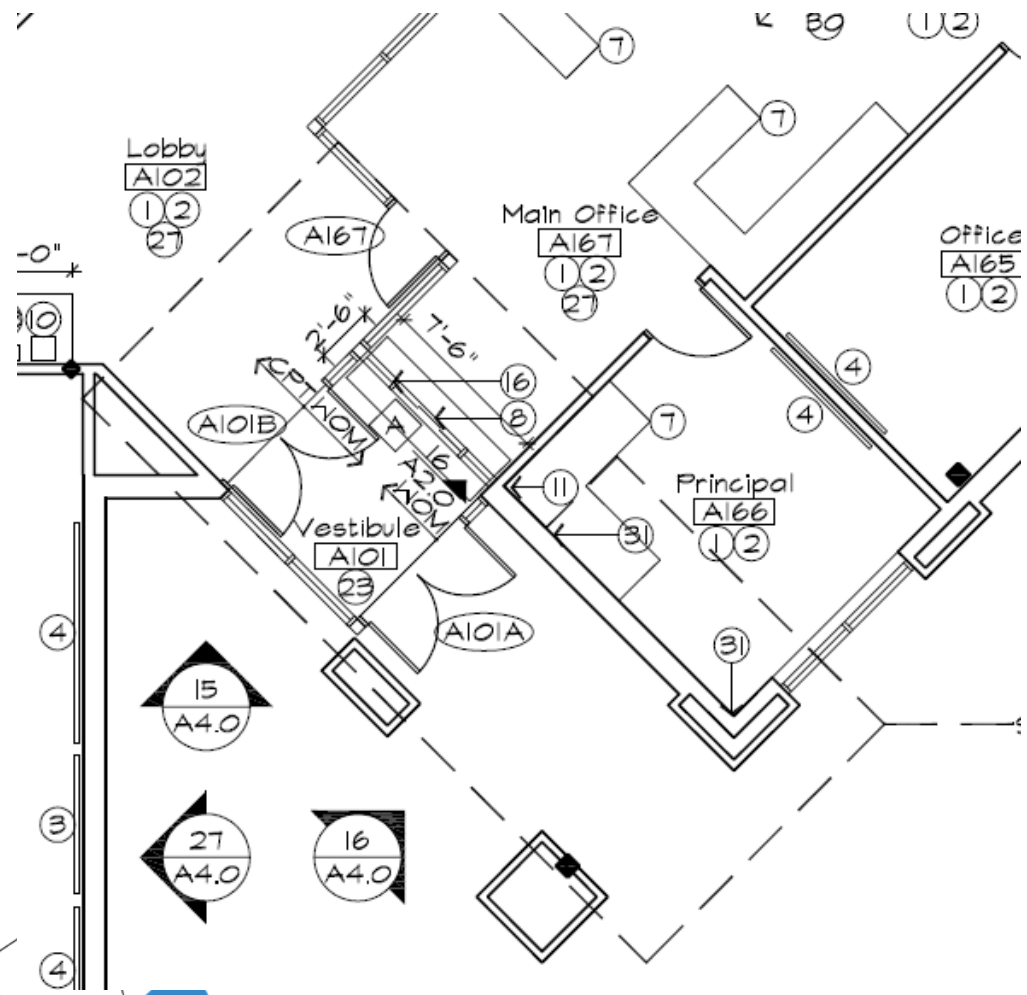
# Blue Heron ES – Efficiency Future Ready MOA – Crossland

Construction



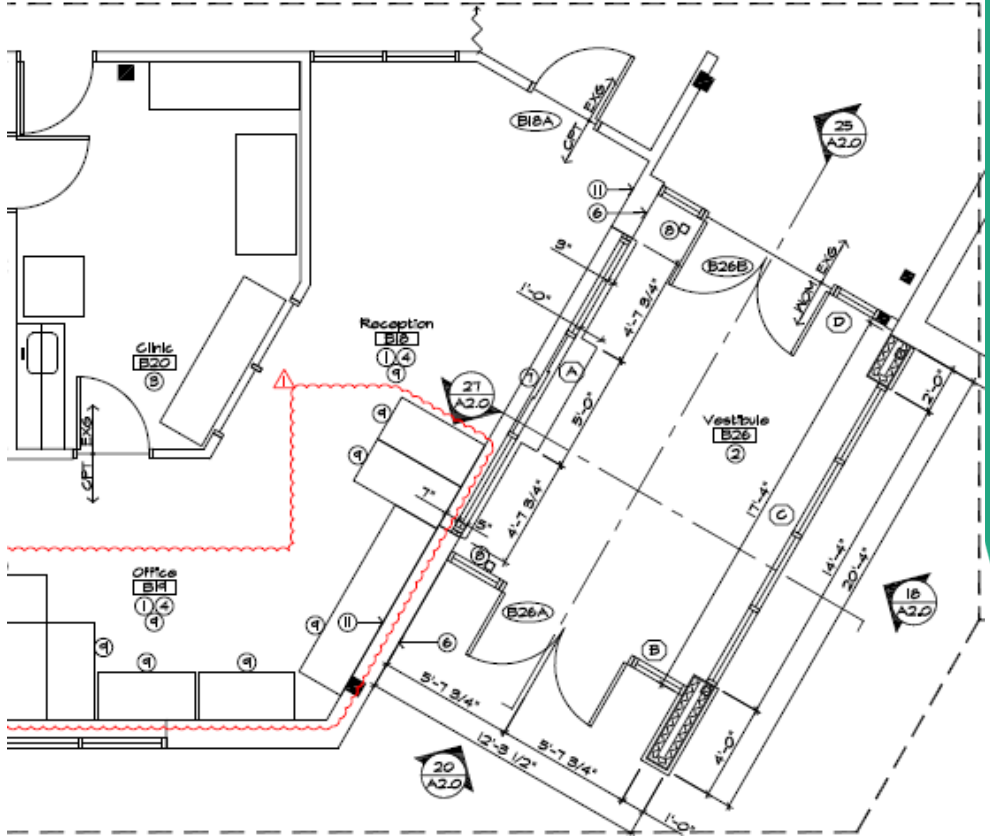
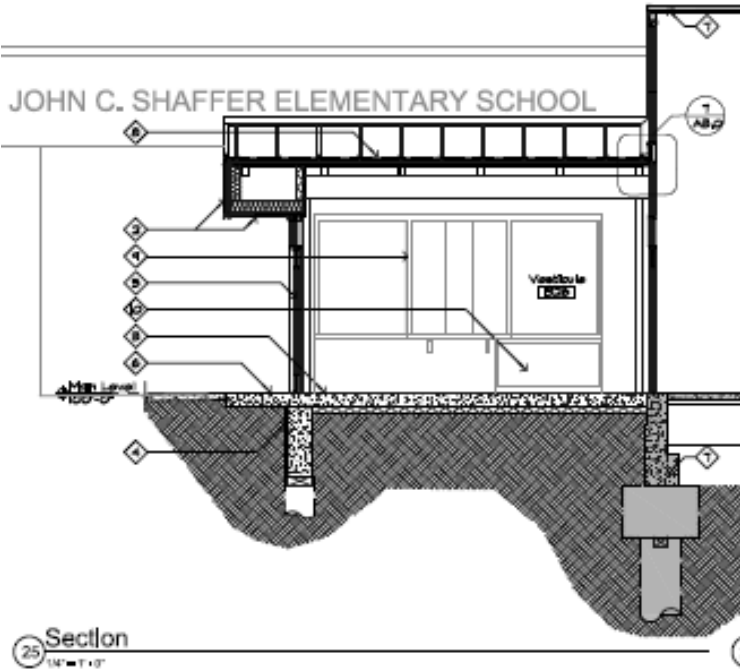
# Mortensen ES – Efficiency Future Ready DLH – Crossland

Construction



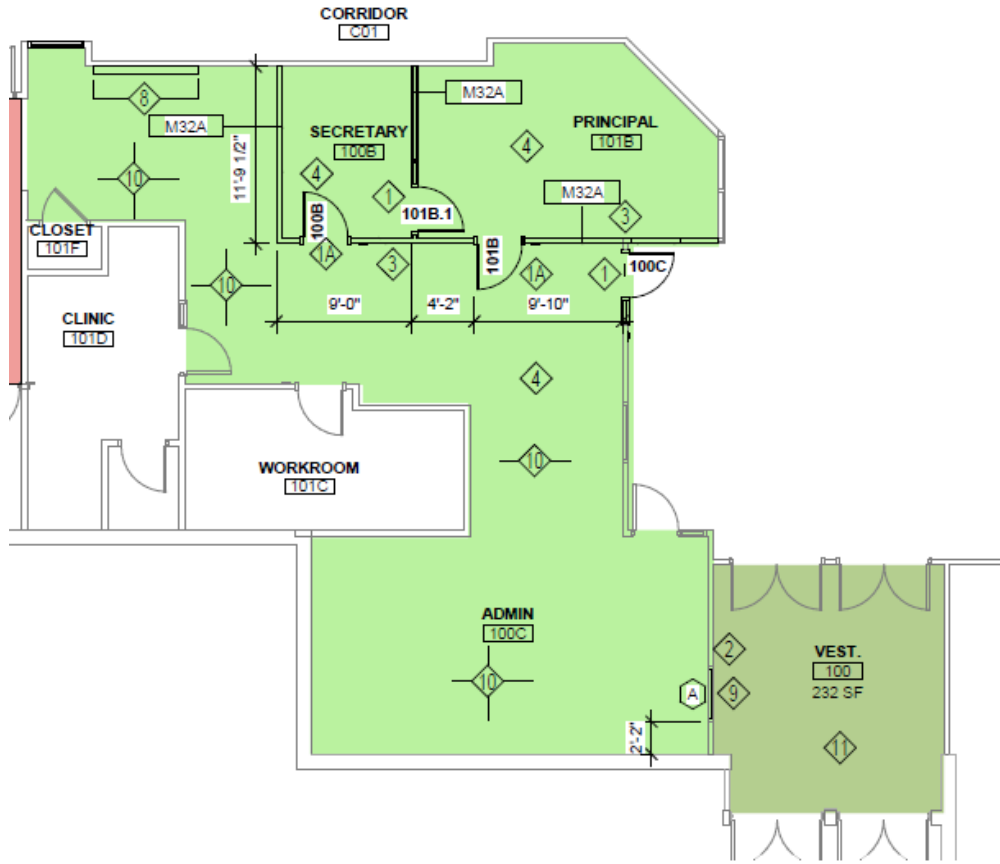
# Shaffer ES – Efficiency Future Ready DLH – Crossland

Construction



# Ken Caryl MS – Efficiency Future Ready HCM – PG Arnold

Construction

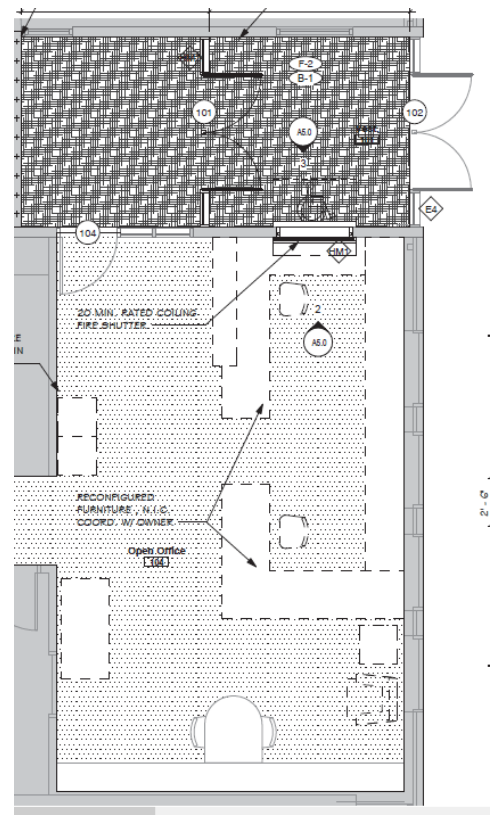


START May 30



# Mt Carbon – Efficiency Future Ready Eidos – Single Track

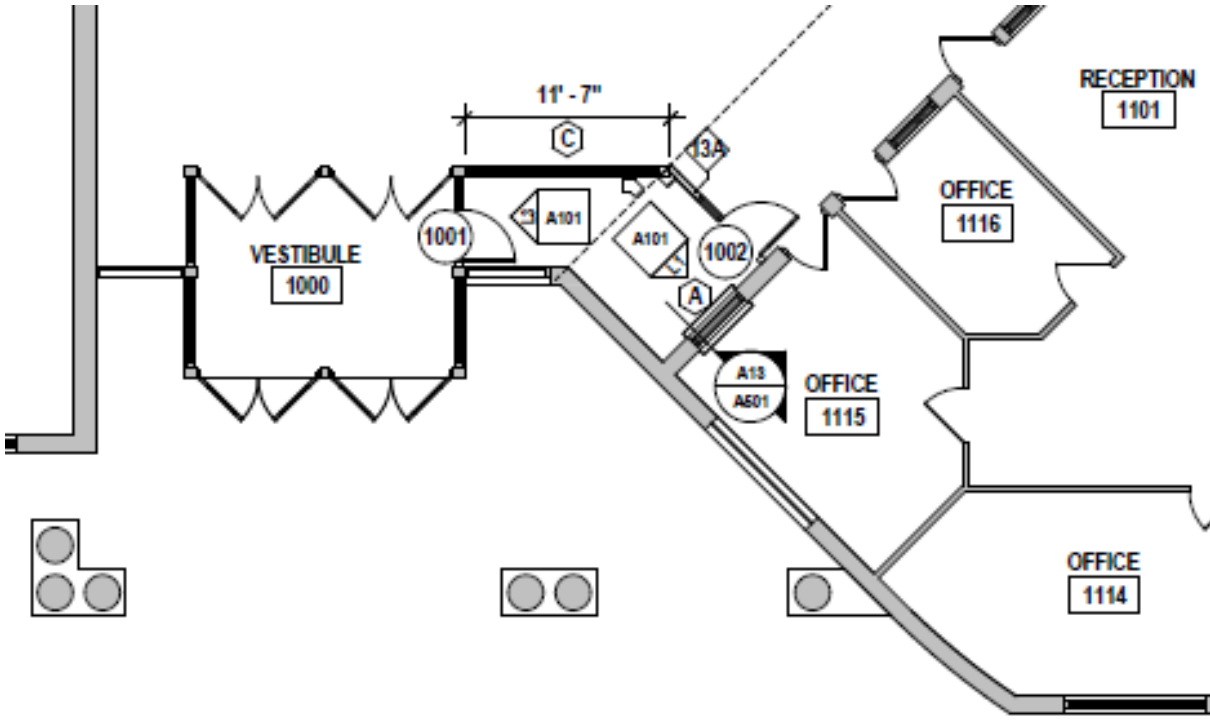
## Construction





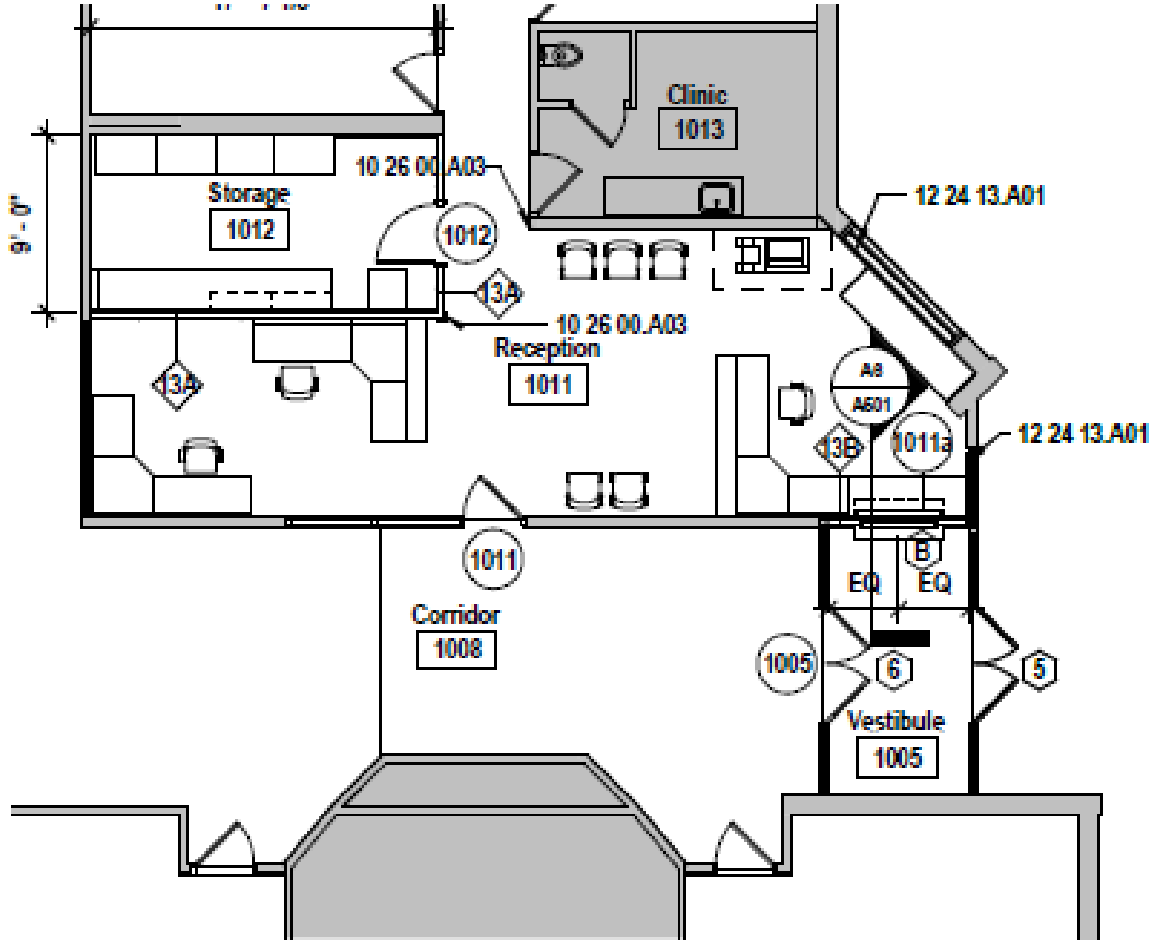
# Summit Ridge MS – Efficiency Future Ready H&M – GTC

Construction



# Kendallvue ES – Efficiency Future Ready H&M – GTC

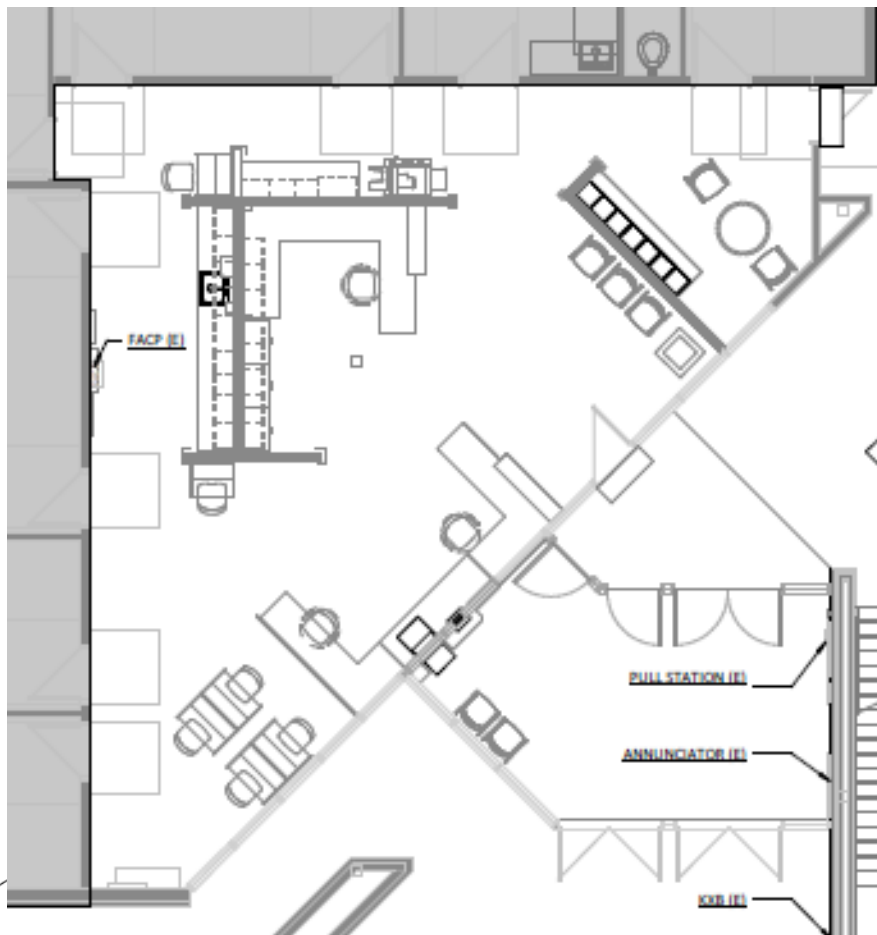
Construction



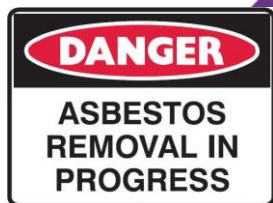
# Deer Creek MS

## Efficiency Future Ready

### RB+B – GTC



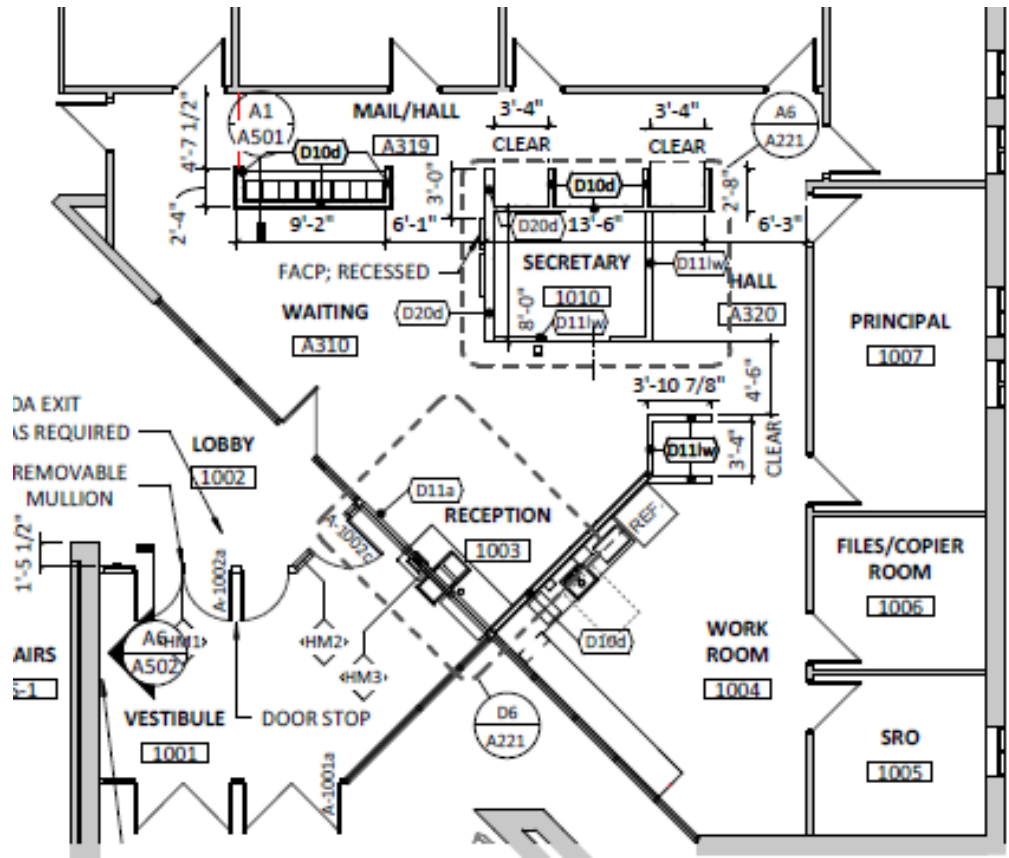
START May 30



# Mandalay MS

## Efficiency Future Ready

### RB+B – GTC

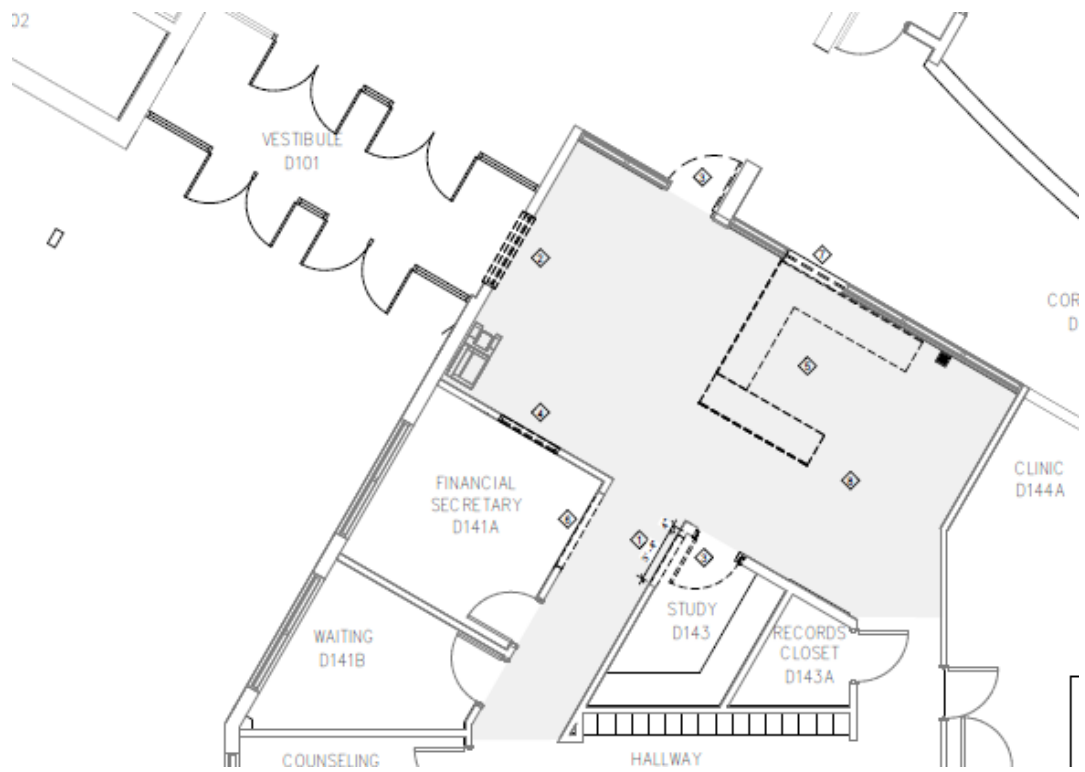


START May 30



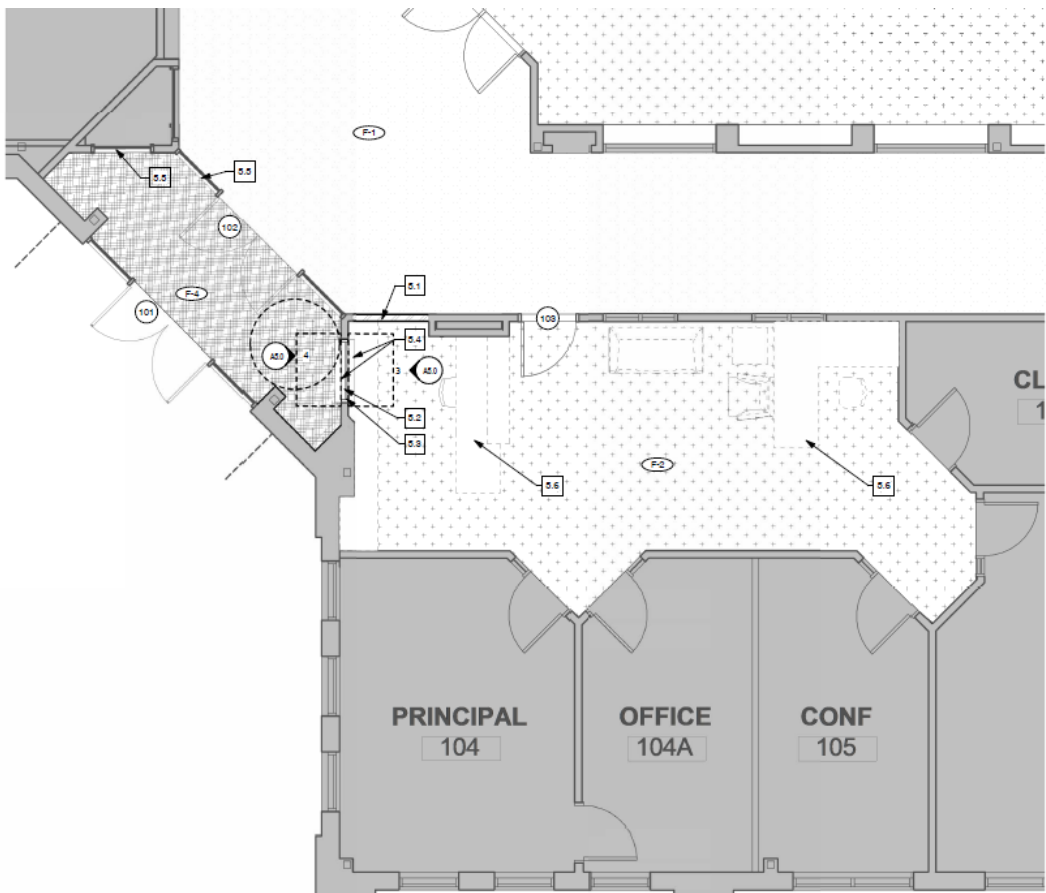
# Dunstan MS – Efficiency Future Ready HCM – Single Track

Construction



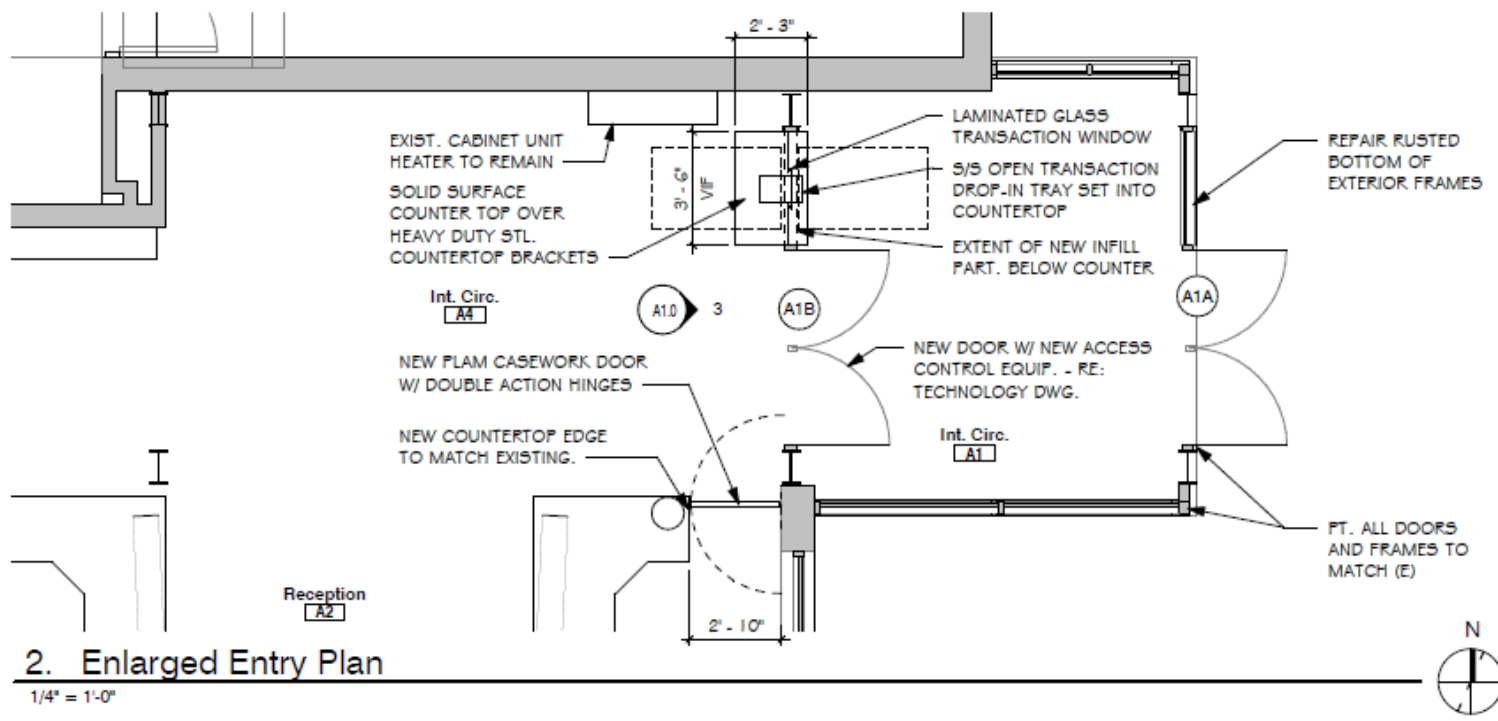
# Sobesky Academy – Efficiency Future Ready Eidos – Singletrack

Construction



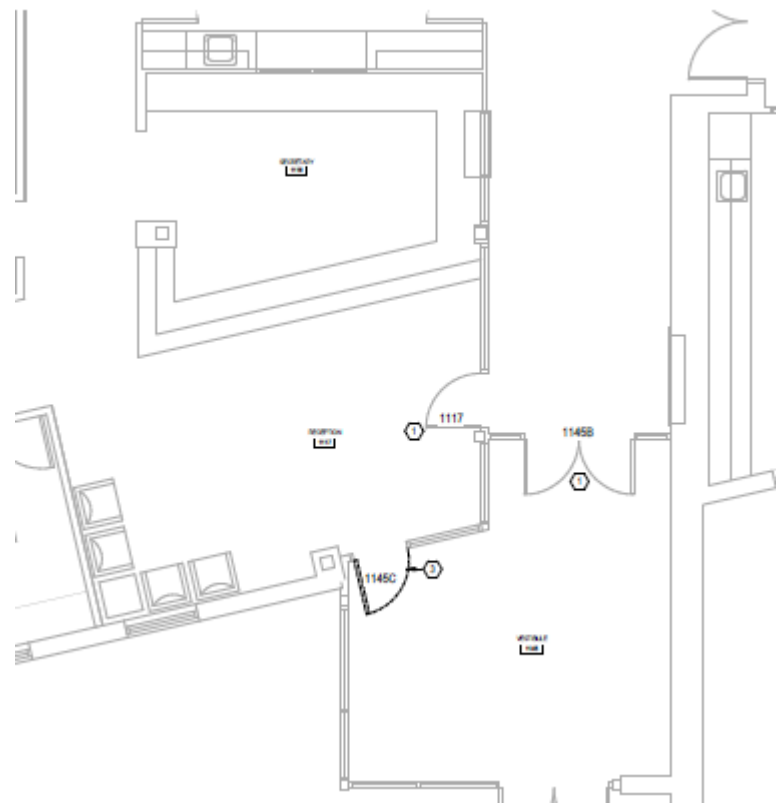
# Pennington ES – Efficiency Future Ready Eidos – Single Track

Construction



# Bear Creek K8 – Efficiency Future Ready MOA – Flintco

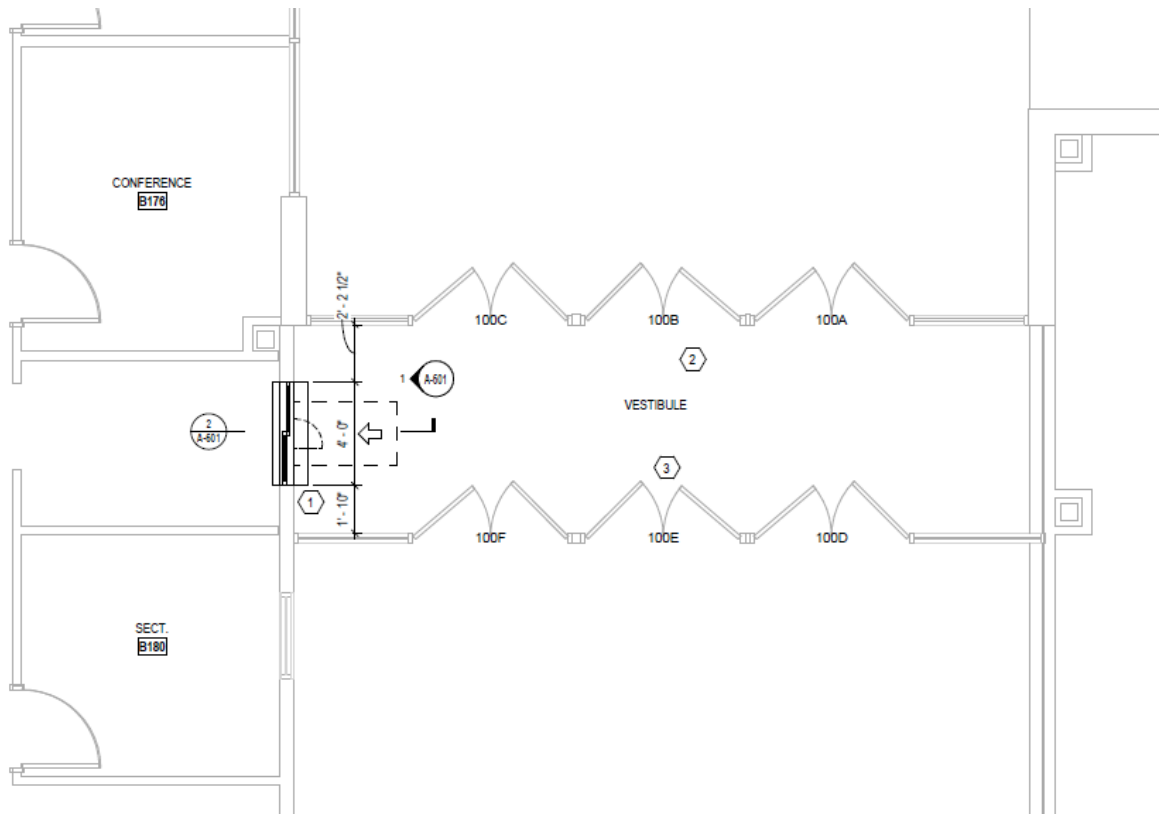
Construction





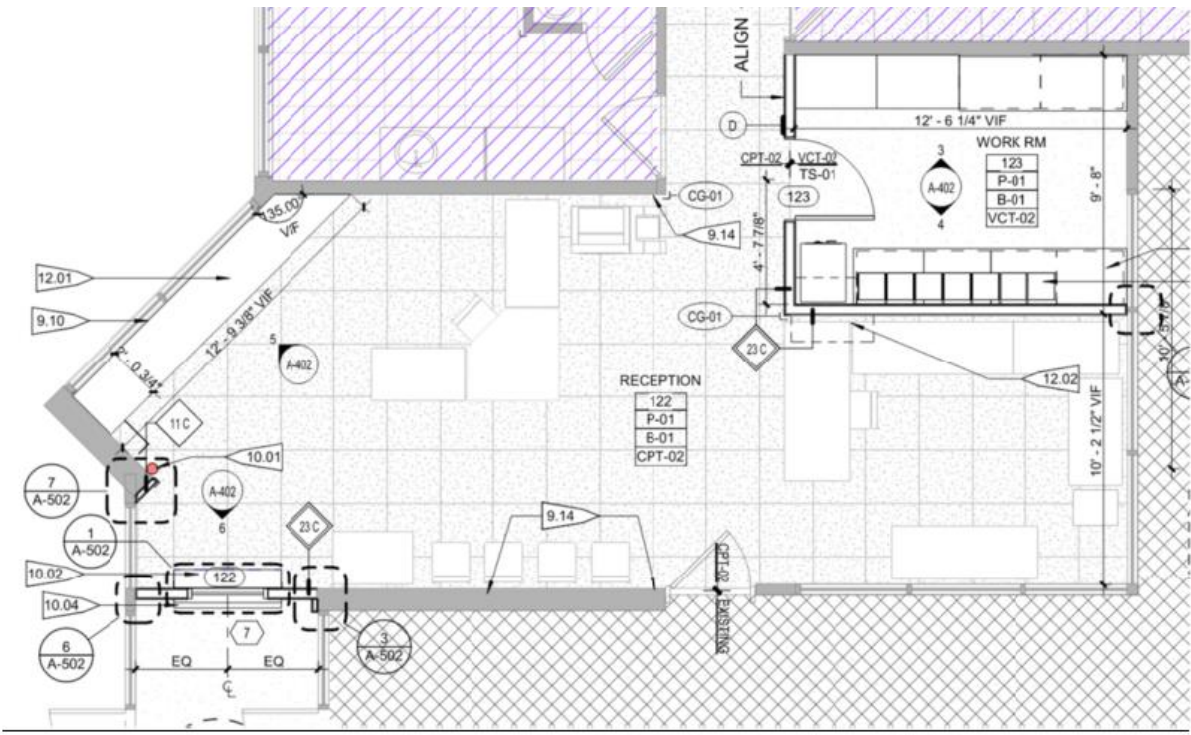
# Falcon Bluffs MS – Efficiency Future Ready MOA – Flintco

Construction



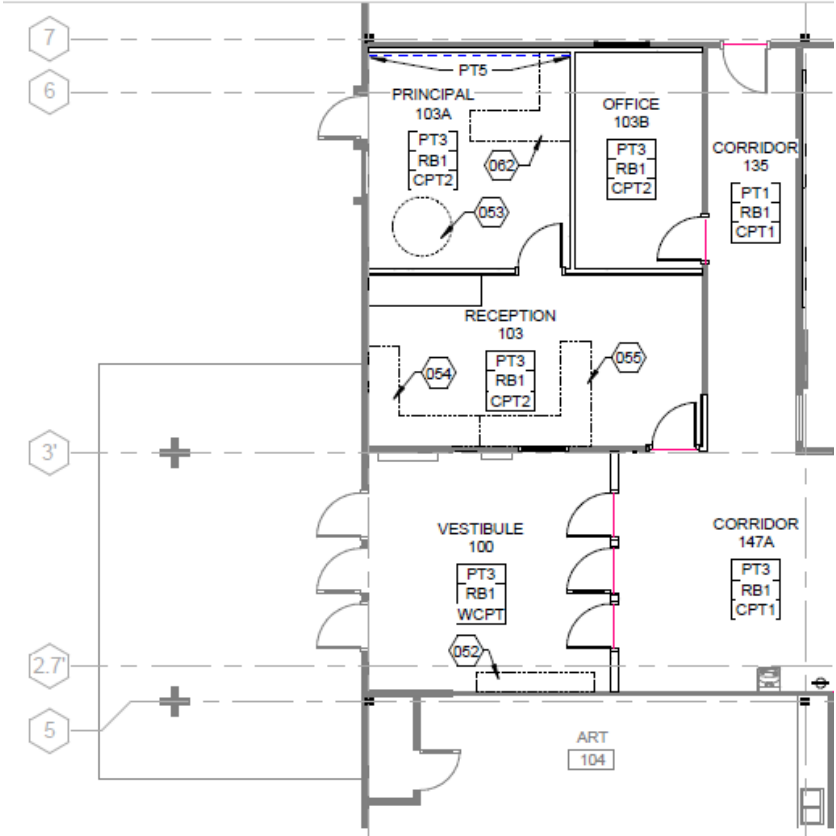
# Governors Ranch – Efficiency Future Ready MOA – Flintco

Construction



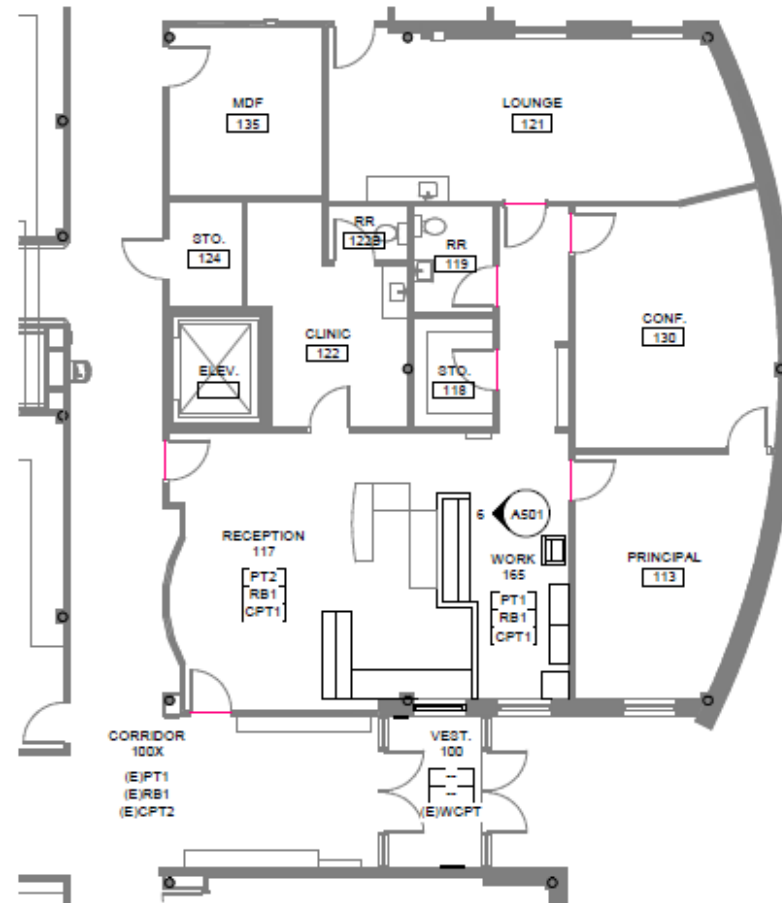
# Little ES – Efficiency Future Ready Treanor HL – ADMiller

Construction



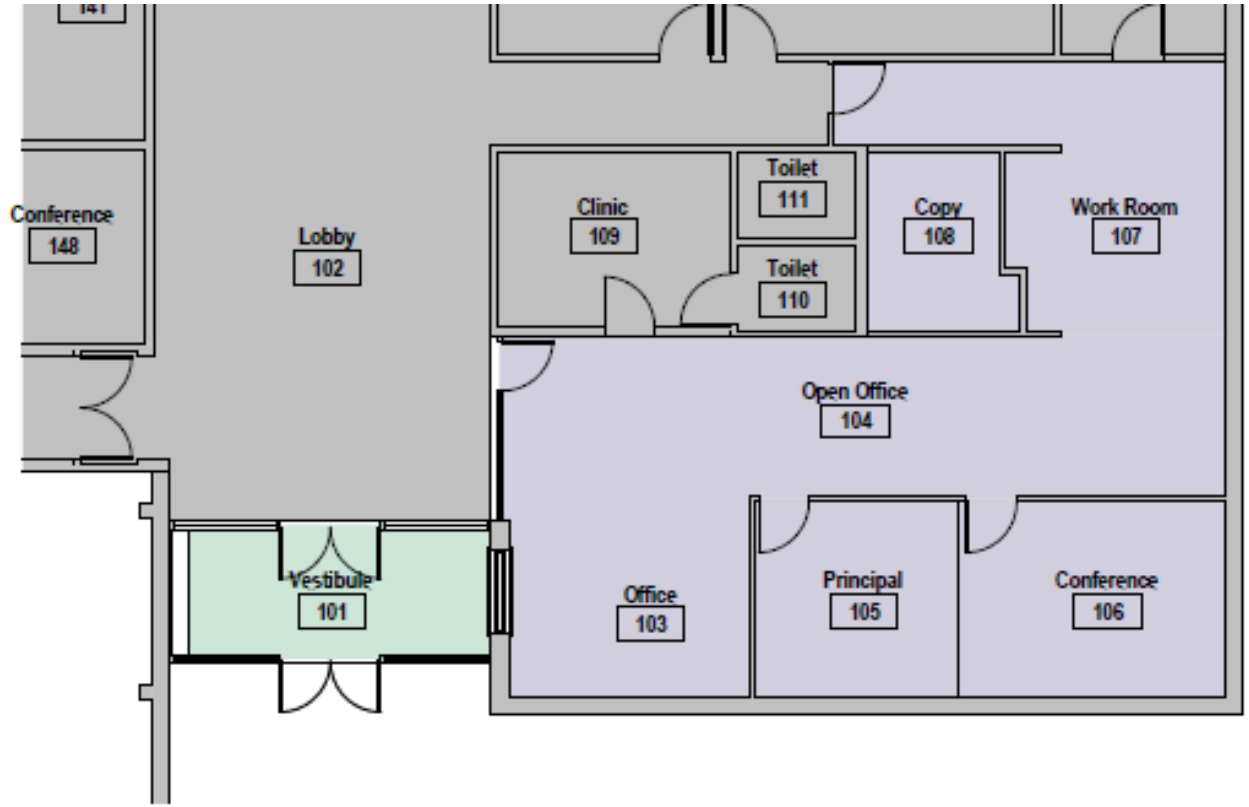
# S Lakewood ES – Efficiency Future Ready Treasor HL – ADMiller

Construction



# Van Arsdale ES – Efficiency Future Ready H+M – O-A-K

Construction

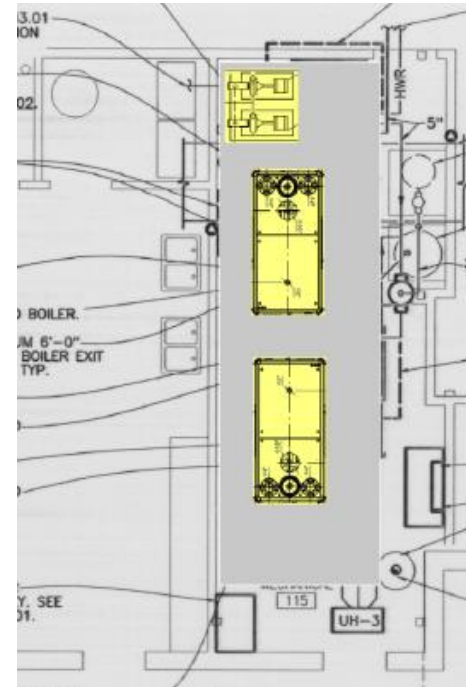
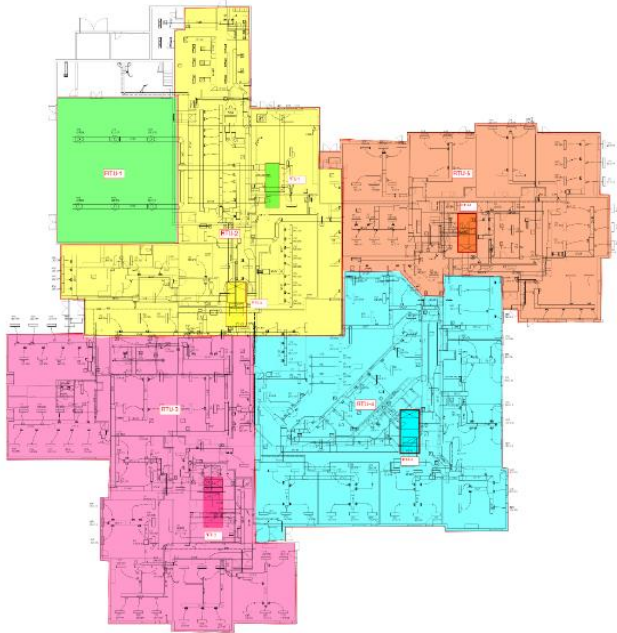


# DW Mechanical 2023

Bradford South (RTU's, Controls),  
Sobesky (Boilers, Pumps, Controls)

\*West Woods ES scope & funding moved back to E&FFR summer 2024

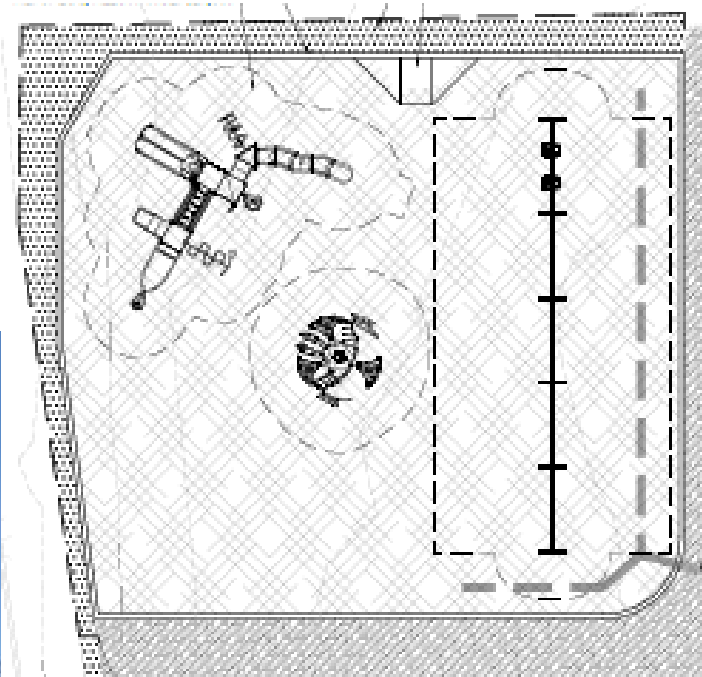
## Columbine – CMGC Himmelman



# DW Playground 2023 Edgewater ES, Hutchinson ES

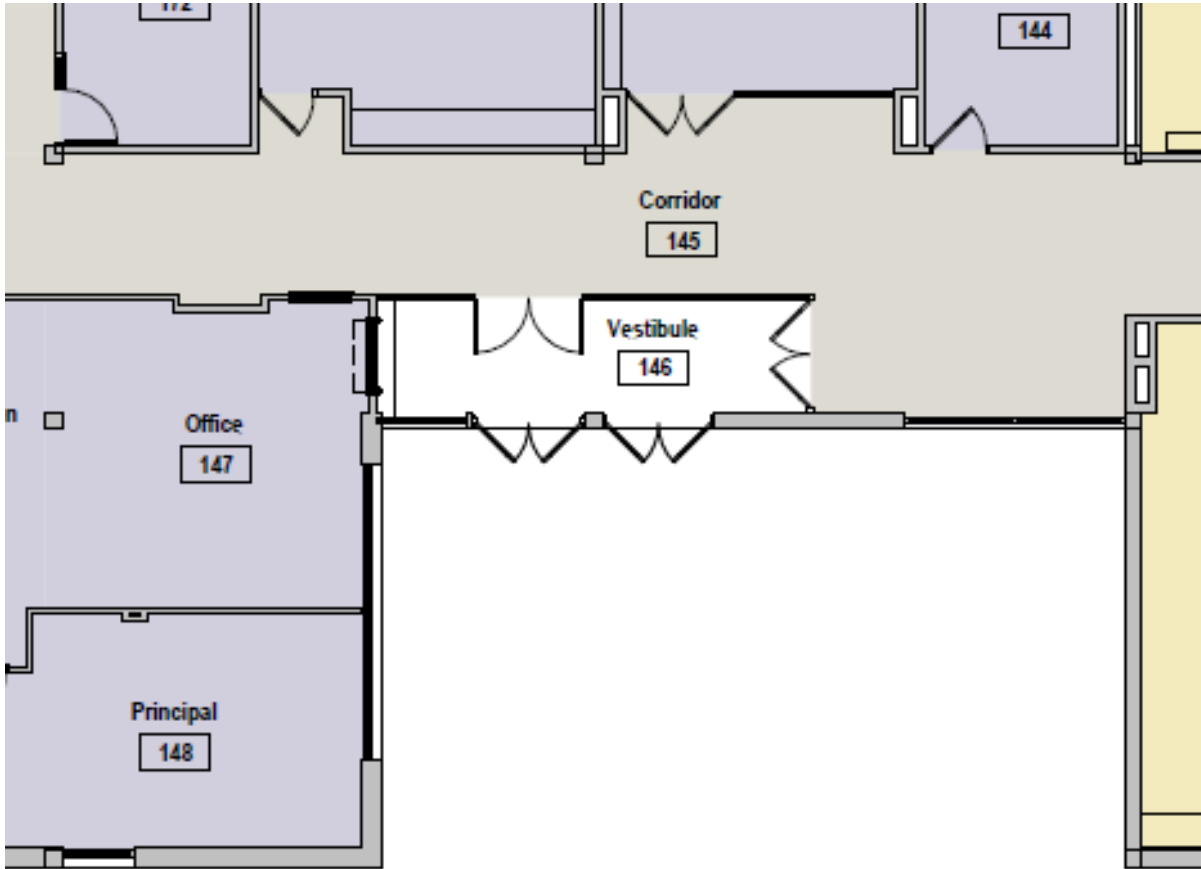
Construction

## Design Concepts - Richdell



# Swanson ES – Efficiency Future Ready H+M – O-A-K

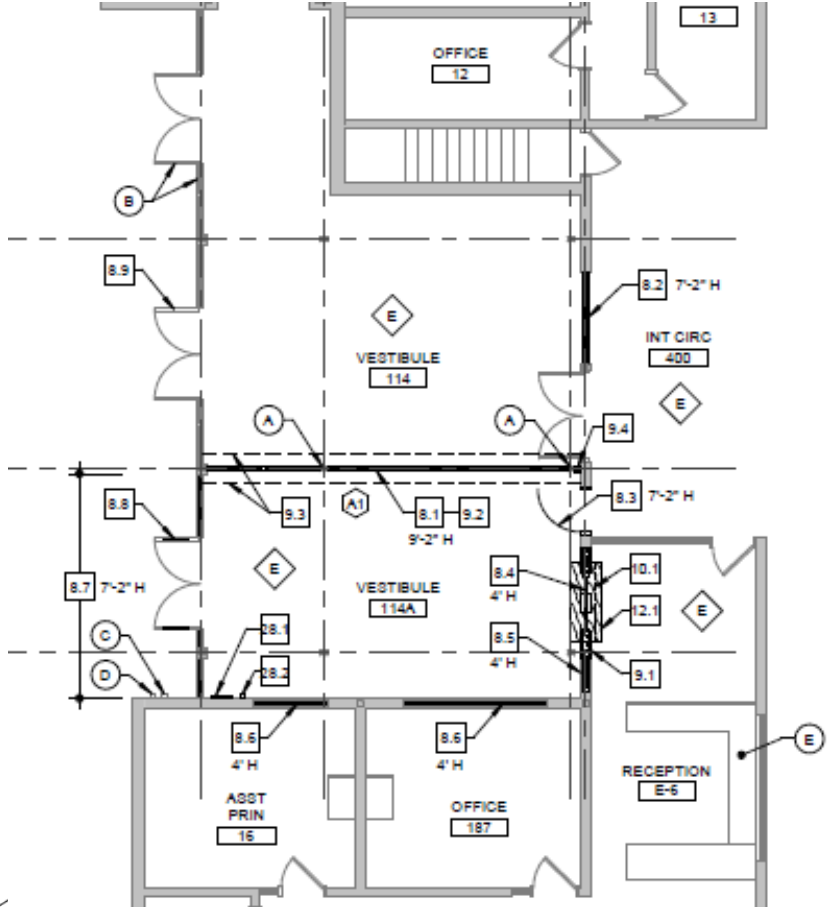
Construction





# Oberon MS – Efficiency Future Ready Larson Incitti – Himmelman

Construction

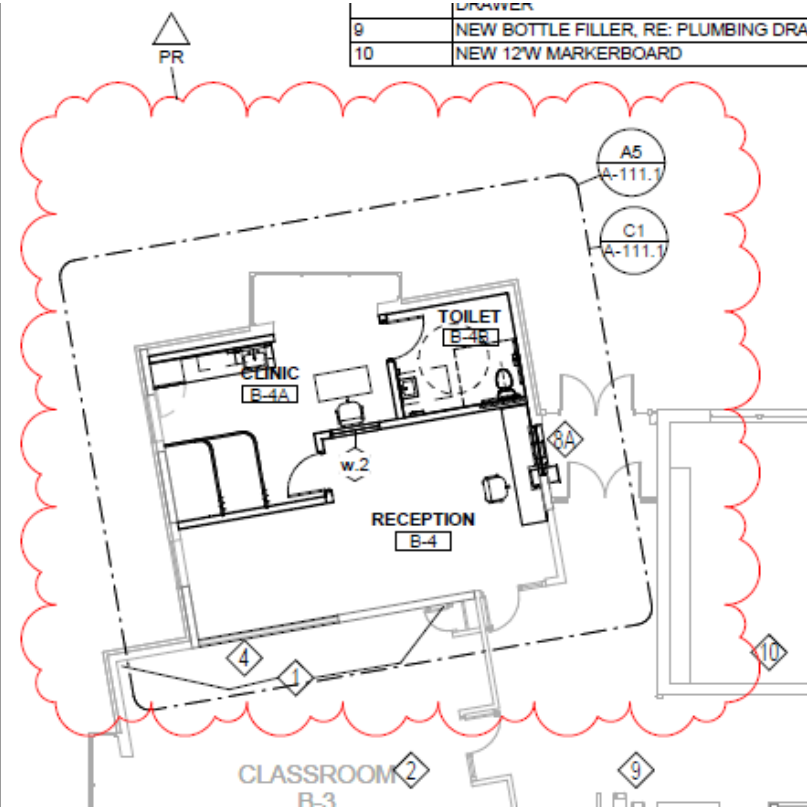


START May 30

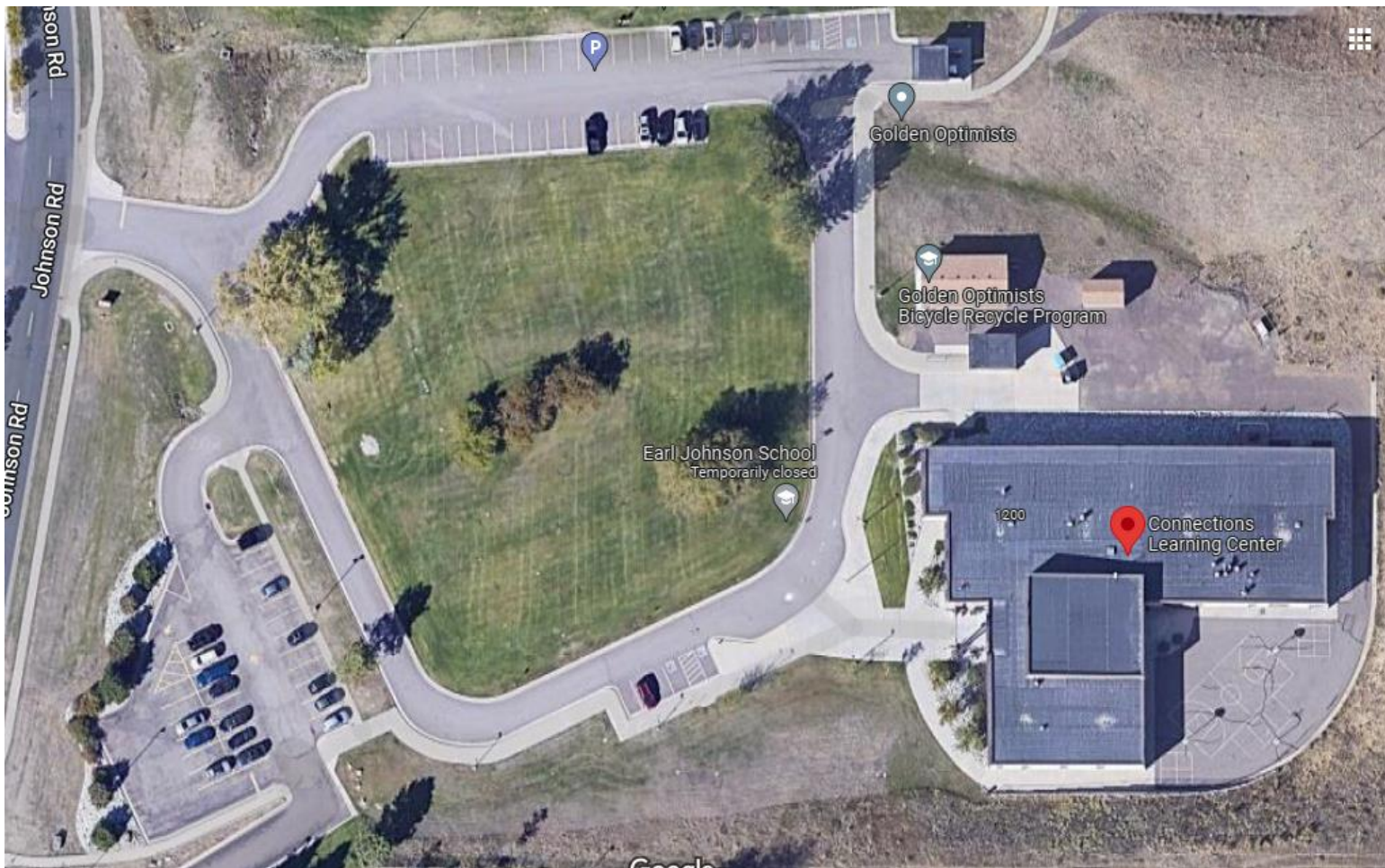


# Edgewater ES – Efficiency Future Ready HCM – PG Arnold

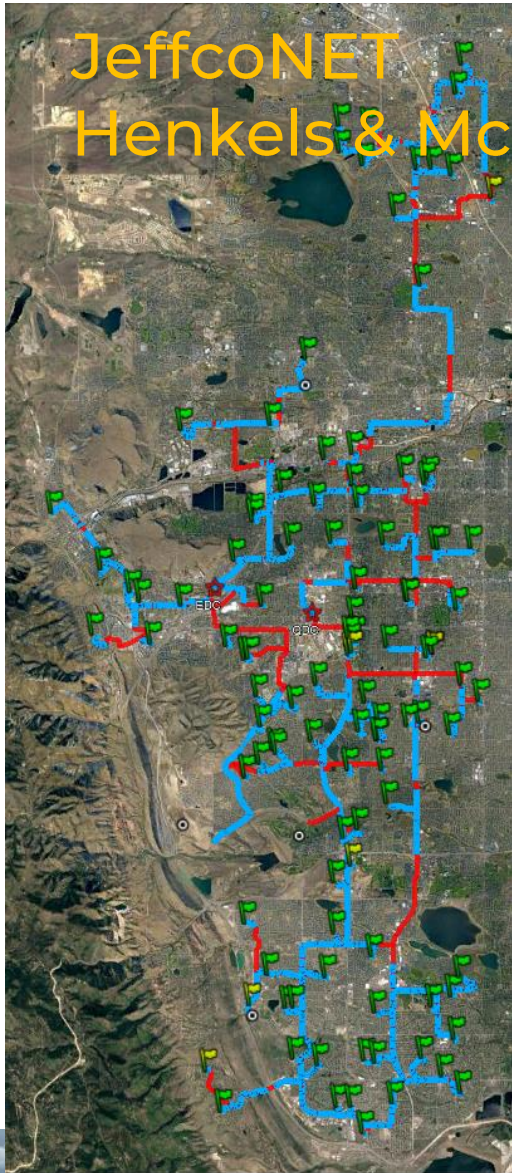
Construction



# Connections – Efficiency Future Ready Studiotrope – Brannon



# JeffcoNET Henkels & McCoy



## Project Information

Project Start  
April 29, 2020

Total Miles of conduit  
to be bored 114

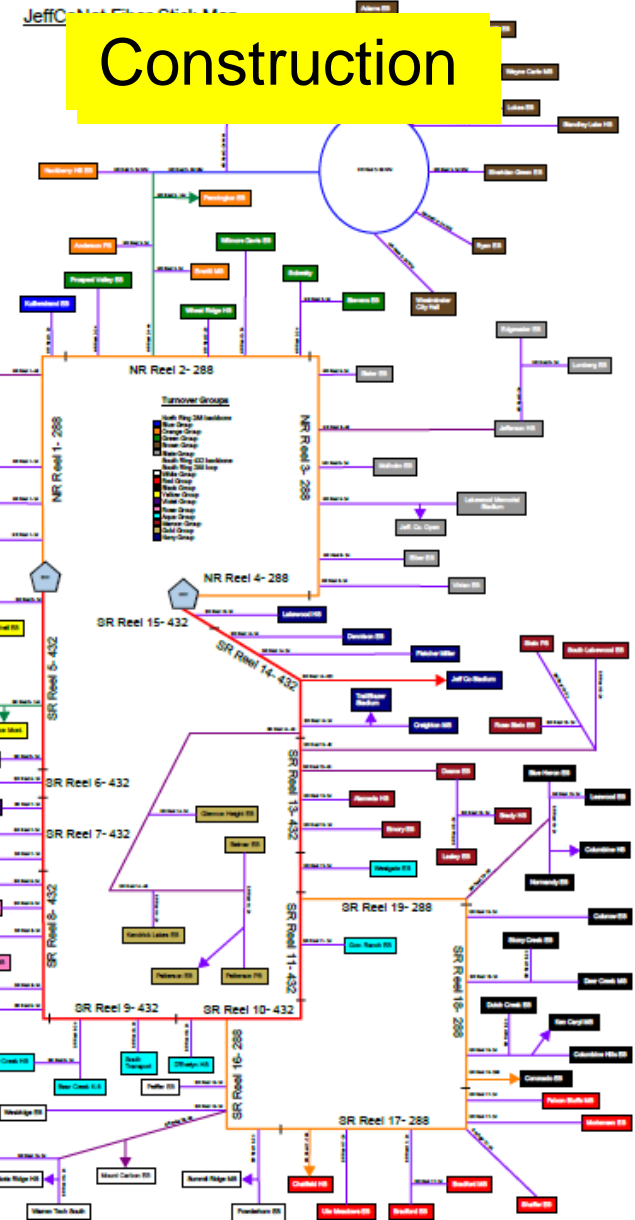
1,101 Permits to date  
9 remaining

Miles Conduit installed  
110 (97%)

Miles Fiber installed  
82 (48%)

27 of 96 sites have been  
Turned over to Jeffco

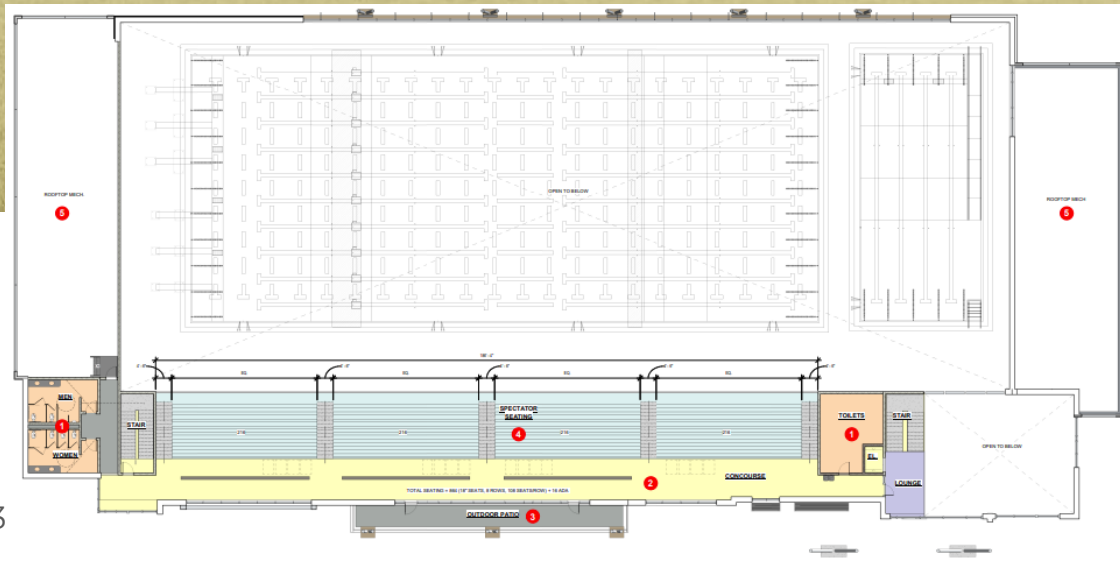
All sites scheduled to be  
Turned over to Jeffco  
Jul 2023



# Meyers Pool

City of Arvada / Jeffco / Apex  
OLC Designs – Saunders CMGC

GMP



# Meyers Pool

## City of Arvada / Jeffco / Apex

### OLC Designs – Saunders CMGC

GMP



# Efficiency Future Ready Wheat Ridge HS Eidos – GTC

Construction



# Efficiency Future Ready Wheat Ridge HS Eidos – GTC

Construction





# Efficiency Future Ready Wheat Ridge HS Eidos – GTC

Construction



# 2023 None Bond Projects

# Turf Field Replacement & Enlargement Wheat Ridge HS Eidos – GTC

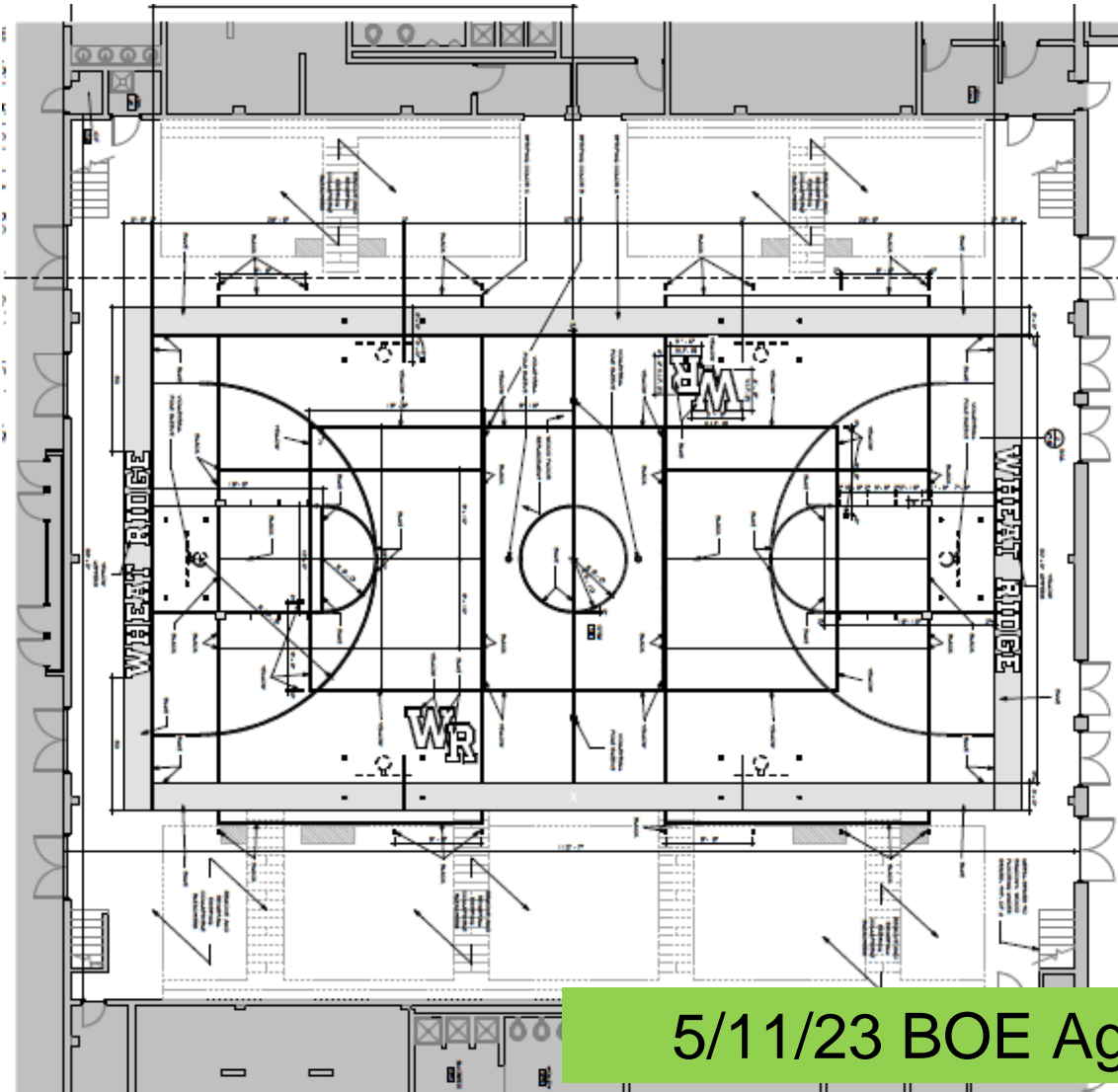
Construction



# Wheat Ridge HS – Gym Floor Replacement

Eidos – GC TBD

CD Review 3/27/23  
Bid Date 4/24/23

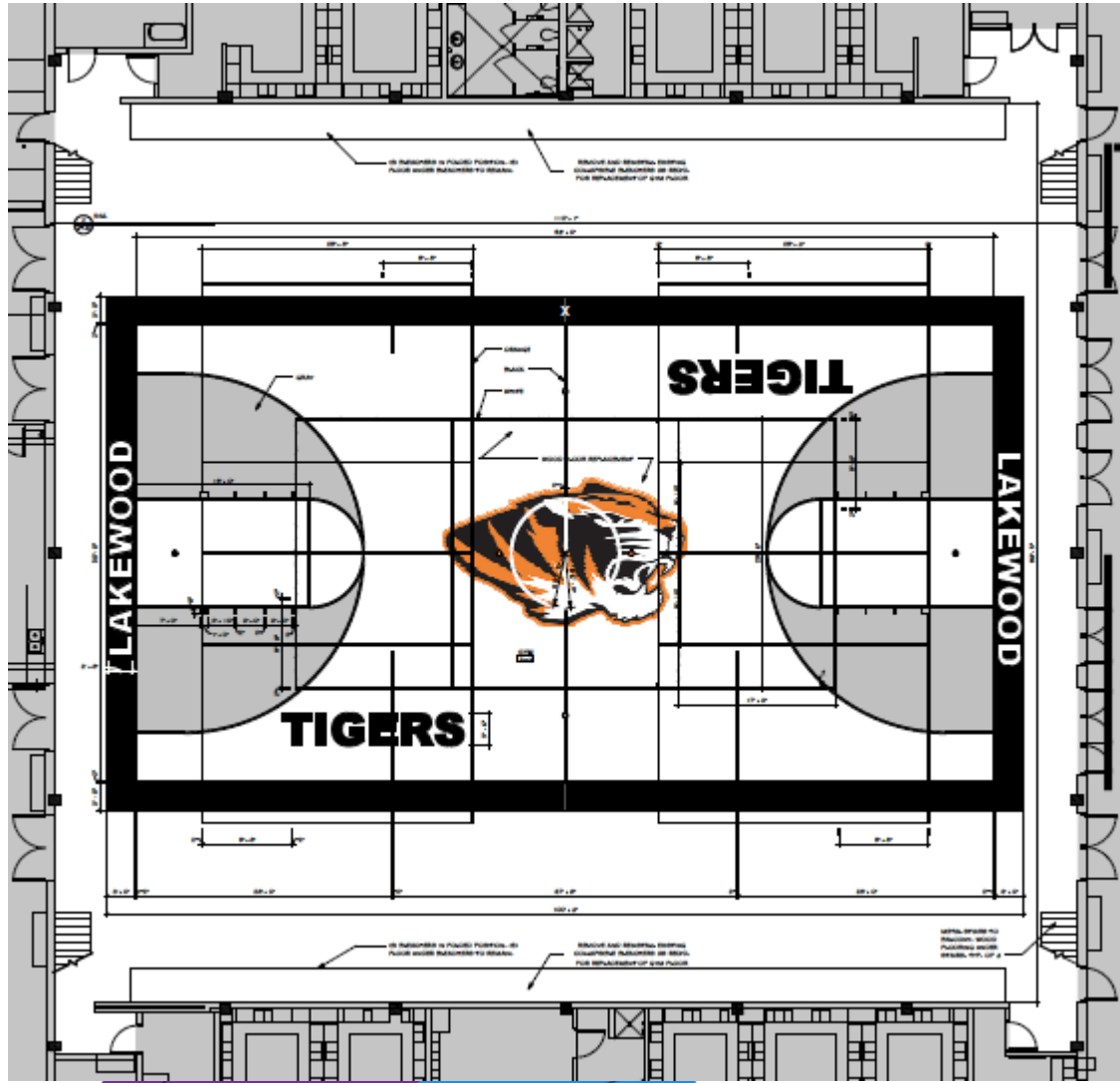


5/11/23 BOE Agenda

# Lakewood HS – Gym Floor Replacement (Flood)

Eidos – GC TBD

CD Review 3/27/23  
Bid Date 4/24/23  
Insurance Funded



# DW Mechanical 2023 South Lakewood (1 RTU)

Columbine – CMGC Himmelman



# DW Exterior Lighting 2023

CD Review 2/10/23  
Re-Bid Date TBD

Ackerman – GC TBD

- Replace Direct Burial electrical lines at the 6th & Kipling Stadium Lighting
- Replace the existing Mercury Vapor lights at Trailblazer Stadium with LED
- Replace parking lot lighting with LED and add exterior security cameras at the Ed Center



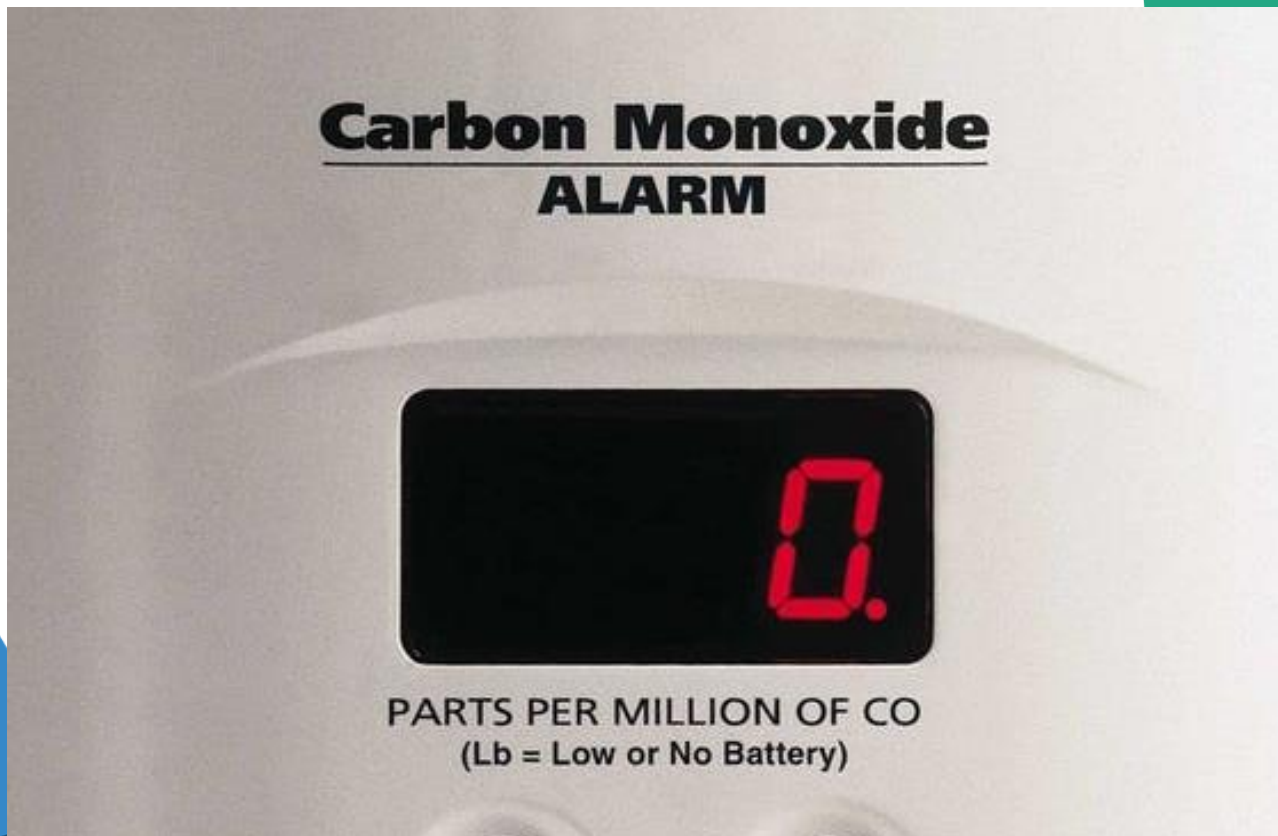
# DW Carbon Monoxide Notification

CD Review 4/7/23  
Bid Date 5/9/23  
FD Mandated

7 Schools – Required by South Metro Fire District

Coronado, Blue Heron, Leawood, Normandy,  
Dutch Creek, Stony Creek, Columbine Hills

TLH Fire – TBD





# Stride Clinic @ Alameda International Jr/Sr High Modular Building Only

TBD

Bid date 5/10/2023  
Grant Funded



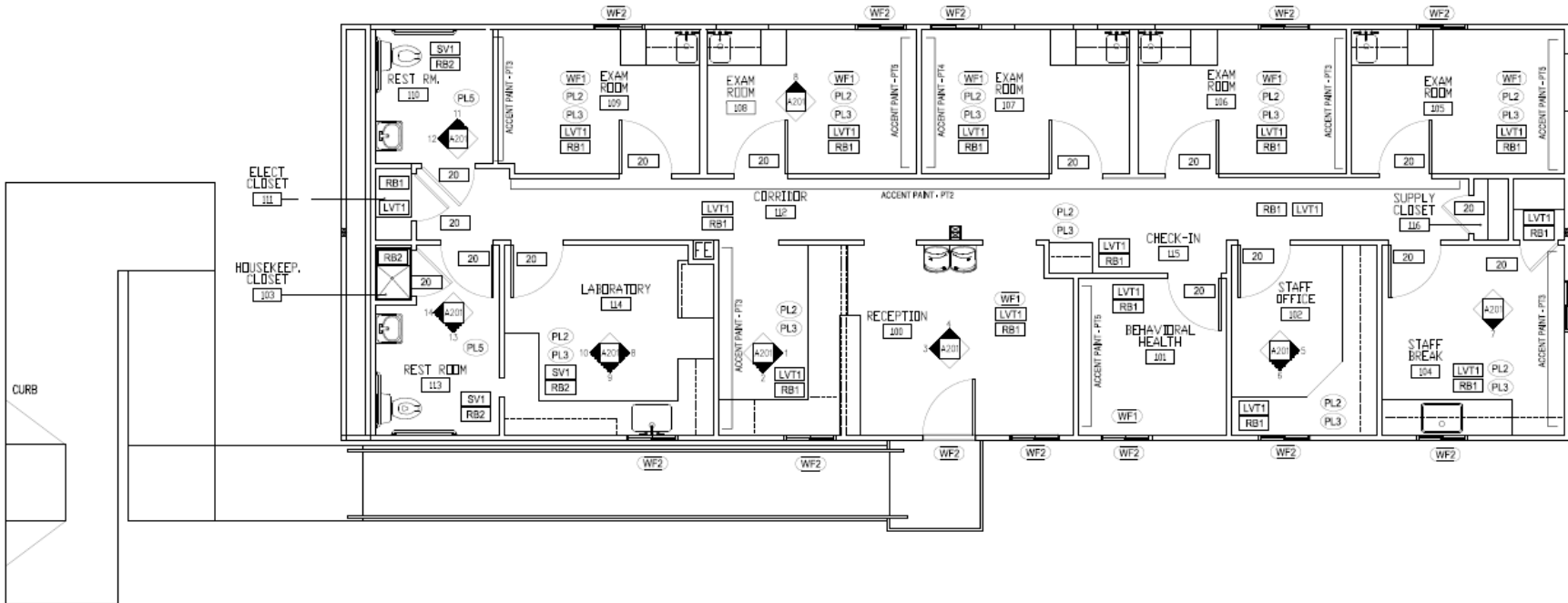
**CONSTRUCTION & INSTALLATION OF  
One(1) 24' x 70' MODULAR**



# Stride Clinic @ Alameda International Jr/Sr High

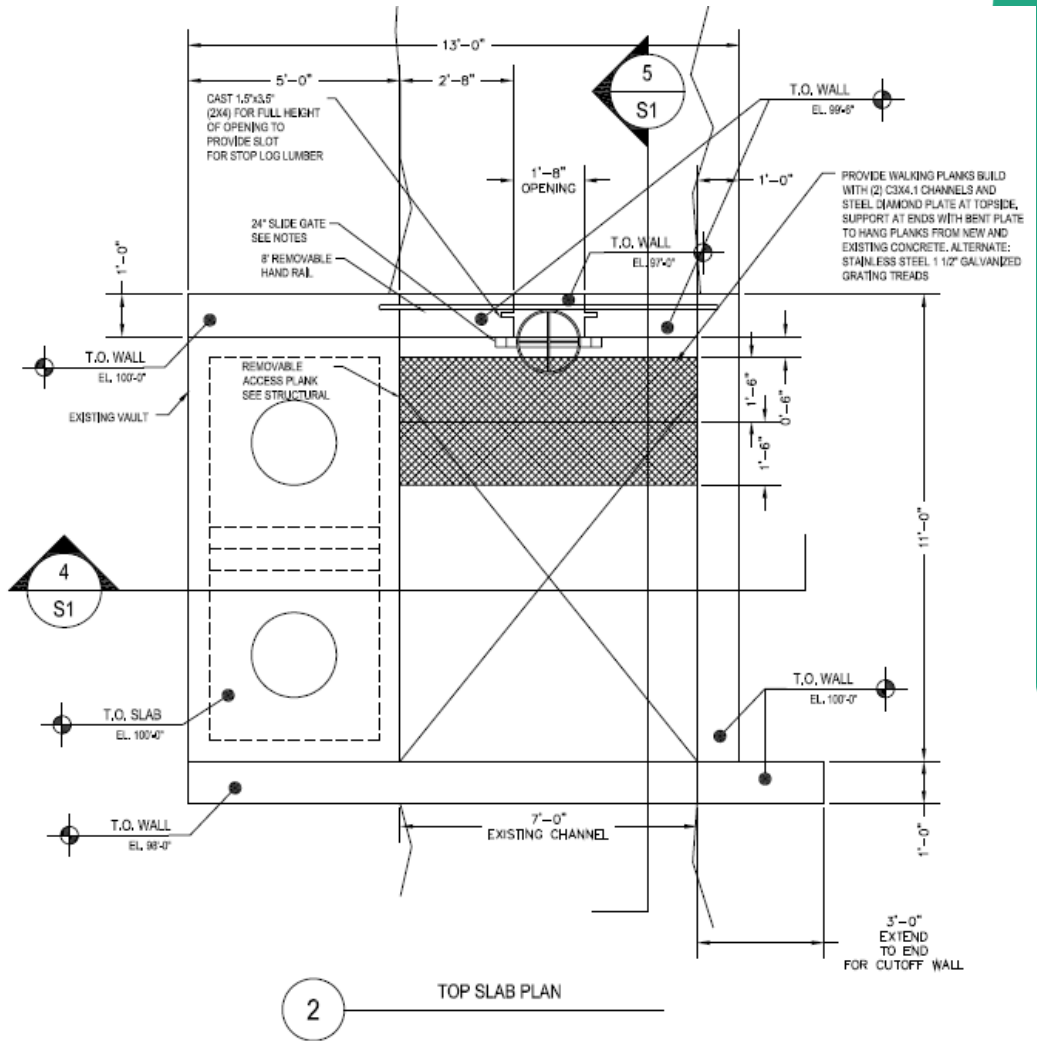
Jordin – TBD

CD Review 3/2/23  
Bid Date 5/24/23  
Jeffco/Stride  
MOU Agreement



# Shadow Mountain Diversion Repair Failing Structure (water compliance) IMEG – GC TBD

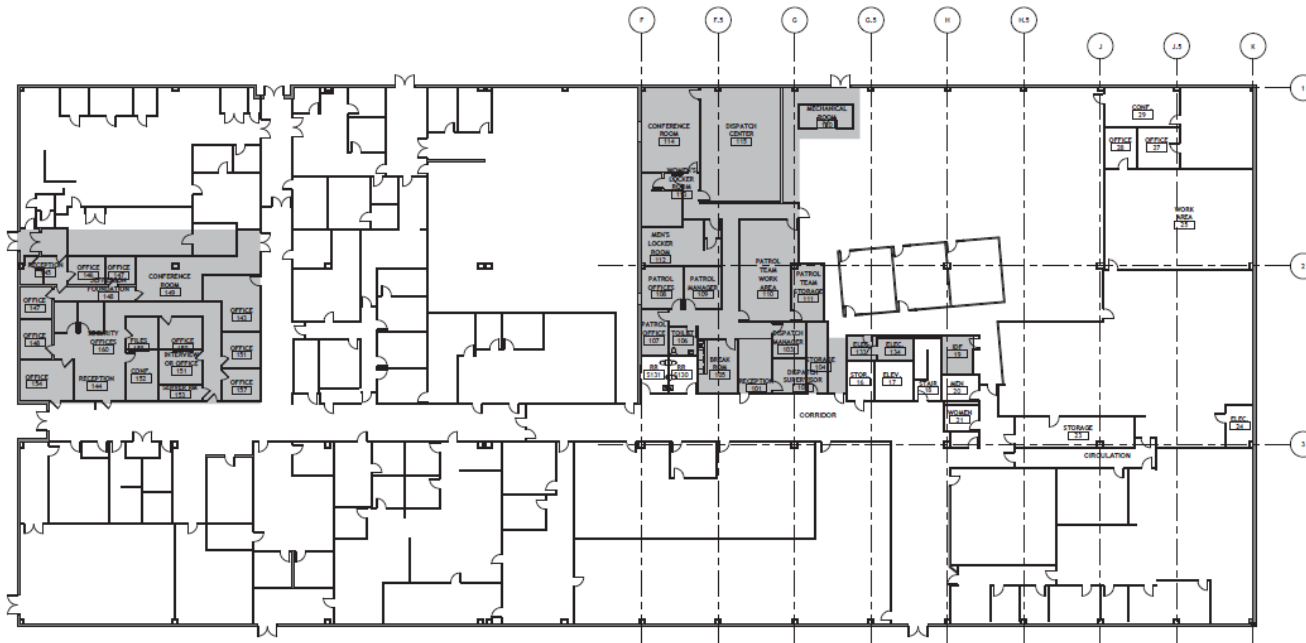
CD Review 4/12/23  
Bid Date 5/5/23



# Security Office Renovation 809 Quail – Building 1

HCM – CMGC WE O’Neal

CD Review 3/23  
(awaiting estimate)  
\$1,000,000 Jeffco  
\$434,236 (SSD) Grant



# 2023 Policy Projects

Capital Investments for Thriving Schools - BOE Jun 08, 2022

Healthy & Equitable Start Times - BOE Mar 03, 2022

Regional Opportunities for Thriving Schools – BOE Nov 10, 2022

# Program Verification & Feasibility Study – DLR Group

## Fletcher Miller Special School

BOE Jun 08, 2022 - Special Meeting-Study/Dialogue Session  
Capital Investments for Thriving Schools

Study Complete  
11/11/22

Refined  
Concept Study  
5/1/23

### Programming

#### Building Program Summary

Test fits will be based upon a 77,014 GSF program composed of small learning communities (suites of spaces including classrooms and other flexible learning spaces) for each cohort. This space program is based upon an enrollment of 100 students, with capacity to flex up to 115, if future staffing supports an increased enrollment. The spaces outlined for the future Fletcher Miller School are sized to accommodate adequate space for collaborative learning, specialized instruction, family and community connections, and specialized storage requirements. Additionally, to support the mobility requirements of this campus, spaces and grossing factors have been sized to either meet or exceed federally mandated American with Disabilities Act (ADA) required clearances.

Throughout each of the DAG meetings, the importance of indoor play space was discussed. These areas may be built into the presented program in a number of ways including within the dining/collaboration spaces within each of the learning communities. Therefore, it has not been included as additional square footage within the program.

### PROGRAM SUMMARY

<b>Admin Area:</b>	<b>3,960 SF</b>
<b>Pre-K Learning:</b>	<b>4,925 SF</b>
<b>K-12 Learning:</b>	<b>13,590 SF</b>
<b>Lighthouse Learning:</b>	<b>5,070 SF</b>
<b>Jeffco Transition:</b>	<b>3,370 SF</b>
<b>Vocational:</b>	<b>1,600 SF</b>
<b>Library/Media:</b>	<b>3,300 SF</b>
<b>Food Service:</b>	<b>1,260 SF</b>
<b>Art/Music/P.E:</b>	<b>7,855 SF</b>
<b>Clinic:</b>	<b>1,190 SF</b>
<b>Therapeutic:</b>	<b>5,930 SF</b>
<b>Bldg. Support:</b>	<b>2,960 SF</b>
<b>TOTAL BUILDING AREA</b>	<b>77,014 SF</b>

Reduced to  
66,244  
Square Feet



# Program Verification & Feasibility Study – DLR Group

## Fletcher Miller Special School

BOE Jun 08, 2022 - Special Meeting-Study/Dialogue Session  
Capital Investments for Thriving Schools

Study  
Complete  
11/11/22

Refined  
Concept Study  
5/1/23

### Combination of reduced Square Footage and Cost/SF utilizing Jeffco Historical Cost/SF data:

Scenario 1 (NEW Build) Updated Construction  
Estimate: **\$28M - \$32M**

Scenario 2 (Addition) Updated Construction  
Estimate: **\$23M – \$27M**

Scenario 3 (Relocation) Updated Construction  
Estimate: **\$19M - \$25M**

March 1, 2023 Update to the Board of Education

# School Closings & Consolidations

Resolution: Board of Education Decision on Staff  
Recommendation Regional Opportunities for Thriving Schools  
Thursday, November 10, 2022

Construction

GMP

\$6,886,094

Start 11/10/22

## Prospect Valley ES (8CR Addition) MOA & Phipps CMGC

Effective July 1, 2023,  
Kullerstrand Elementary  
School will close and  
combine its existing  
attendance area with that  
of Prospect Valley  
Elementary School;

GH Phipps to remain the contractor for the new scope.

37 Week Design & Construction  
Schedule





# School Closings & Consolidations

Construction

Resolution: Board of Education Decision on Staff  
Recommendation Regional Opportunities for Thriving Schools  
Thursday, November 10, 2022

## Prospect Valley ES (8CR Addition) MOA & Phipps CMGC



# School Closings & Consolidations

Resolution: Board of Education Decision on Staff  
Recommendation Regional Opportunities for Thriving Schools  
Thursday, November 10, 2022

37 Week Design & Construction Schedule

**Stober ES**

**(5CR Addition + Kitchen) LOA & CMGC GTC**

**Construction**

**IGMP**

**\$5,422,602**

Start 3/20/23



Effective July 1, 2023, New Classical Academy at Vivian will close and combine its existing attendance area with that of Stober Elementary School;



Permit



# School Closings & Consolidations

Construction

Resolution: Board of Education Decision on Staff  
Recommendation Regional Opportunities for Thriving Schools  
Thursday, November 10, 2022

**Stober ES**

**(5CR Addition + Kitchen) LOA & CMGC GTC**



# School Closings & Consolidations

Resolution: Board of Education Decision on Staff  
Recommendation Regional Opportunities for Thriving Schools  
Thursday, November 10, 2022

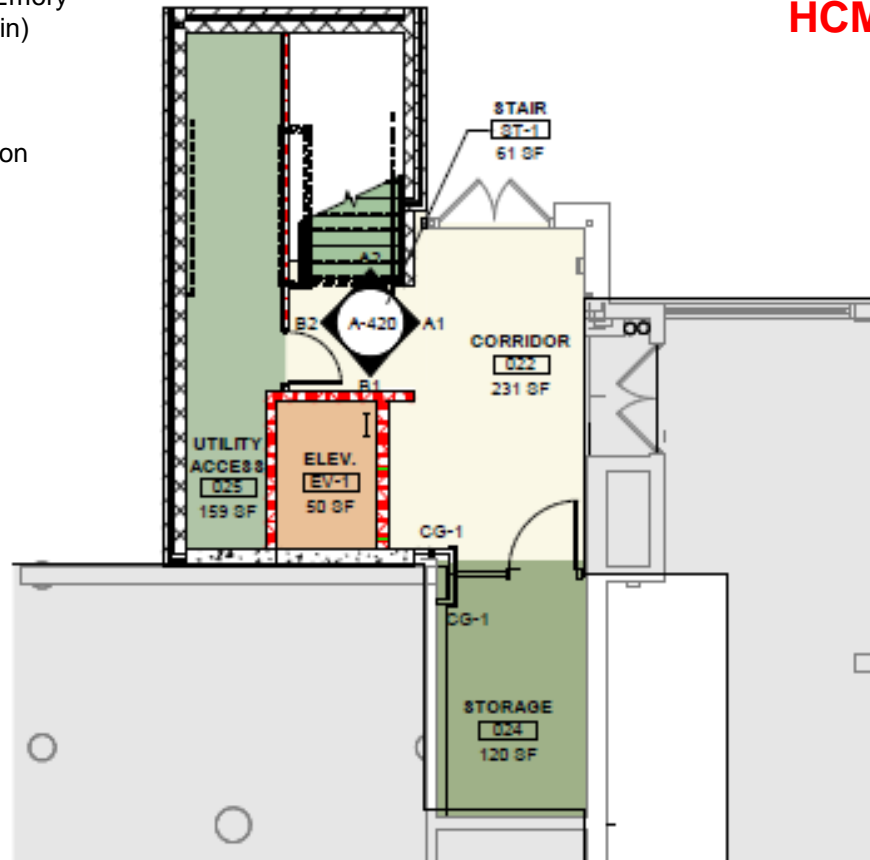
Construction

GMP  
\$1,713,656

**Stein ES  
(Elevator/Stair Addition)  
HCM & CMGC Himmelman**

Alameda: Emory → Lasley (Emory  
Center Program → Rose Stein)

37 Week Design & Construction  
Schedule



Permit



# School Closings & Consolidations

Resolution: Board of Education Decision on Staff  
 Recommendation Regional Opportunities for Thriving Schools  
 Thursday, November 10, 2022

Construction

GMP  
 \$2,268,824

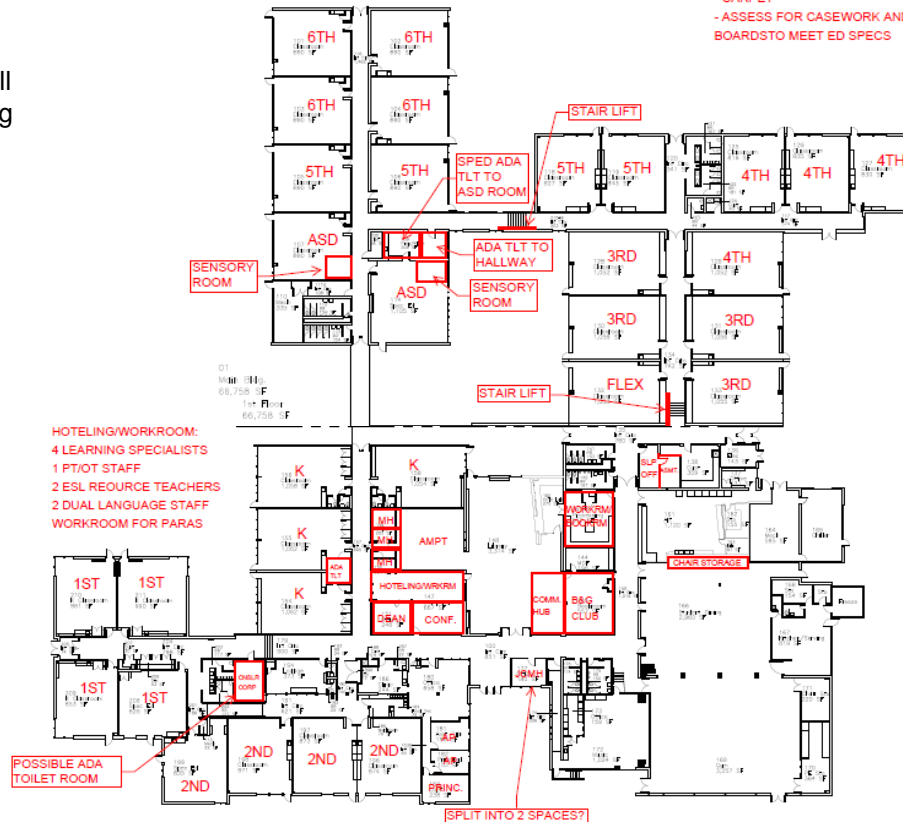
## Lasley ES

9 Week Construction Schedule

## (ADA Lifts / Toilet Rooms, Admin & Parking) H&M & CMGC Bryan

A. Effective July 1, 2023, Emory Elementary School will close and combine its existing attendance area with that of Lasley Elementary School;

CLASSROOM SCOPE:  
 - PAINT  
 - CARPET  
 - ASSESS FOR CASEWORK AND DISPLAY BOARDSTO MEET ED SPECS



HOTELING/WORKROOM:  
 4 LEARNING SPECIALISTS  
 1 PT/OT STAFF  
 2 ESL REOURCE TEACHERS  
 2 DUAL LANGUAGE STAFF  
 WORKROOM FOR PARAS

START May 30



GRAPHIC BARSCALE  
 BUILDINGS 01 & 02 - 1ST FLOOR PLAN  
 SCALE : 1/32" = 1'-0"

RE-NUMBER BUILDING TO CURRENT JEFFCO STANDARDS?



Permit Applied 3/10/23



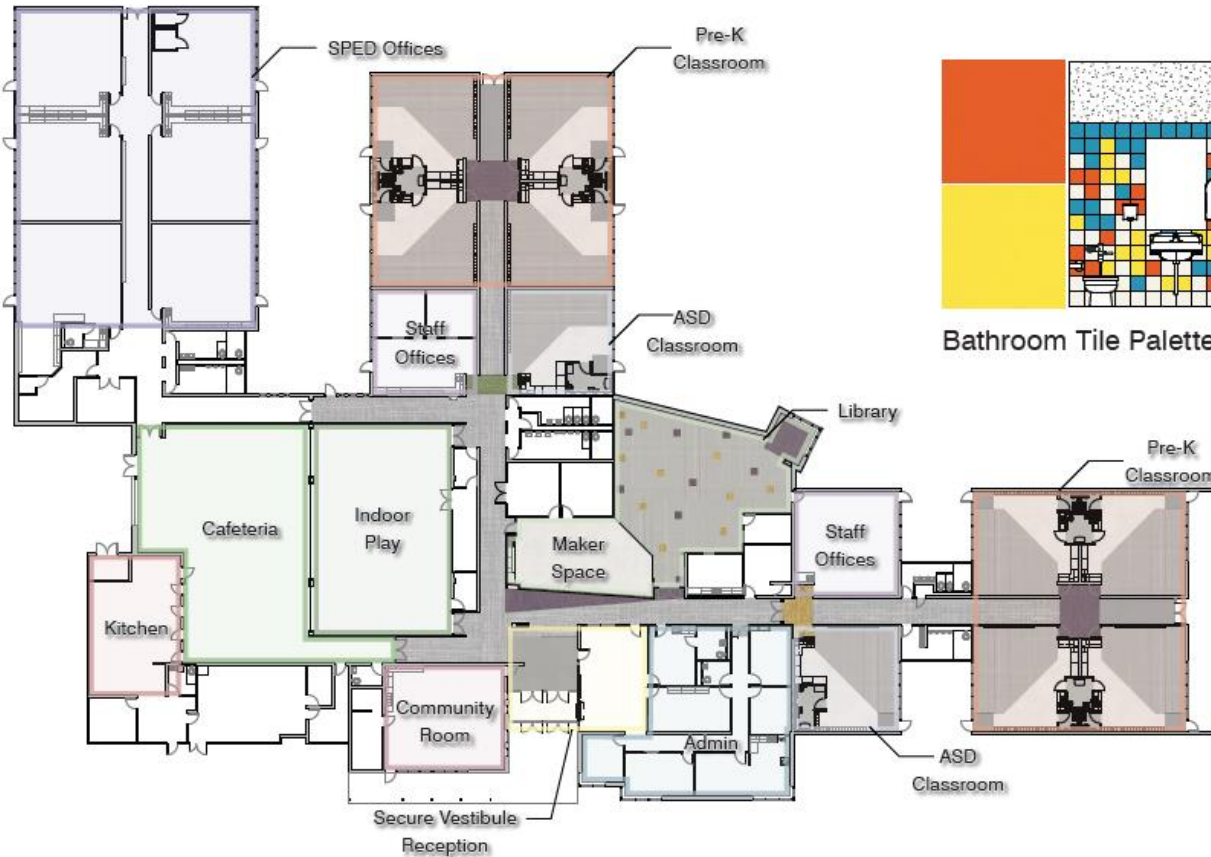
# School Closings & Consolidations

Resolution: Board of Education Decision on Staff  
Recommendation Regional Opportunities for Thriving Schools  
Thursday, November 10, 2022

Construction

GMP 3/15/23

\$2,359,410



Bathroom Tile Palette



Arvada West:  
Campbell =  
ECE Center  
2023-24\*

Identify preschool options based on an articulated strategy for district-wide preschool as part of students' PK-12 educational experience;

9 Week Construction Schedule



Permit Applied 3/13/23

# School Closings & Consolidations

Resolution: Board of Education Decision on Staff  
Recommendation Regional Opportunities for Thriving Schools  
Thursday, November 10, 2022

Construction

GMP 4/3/23  
\$911,936

9 Week Construction Schedule

## DW – Receiving Schools Upgrades Bundle #2 A/E MOA – CMGC Saunders

### Sierra ES

Identify preschool options based on an articulated strategy for district-wide preschool as part of students' PK-12 educational experience;



  
Permit Applied 3/13/23

# School Closings & Consolidations

Resolution: Board of Education Decision on Staff

Recommendation Regional Opportunities for Thriving Schools

Thursday, November 10, 2022

Construction

Kendallvue  
Bid

\$187,200

Fremont  
GMP

\$304,571

Lukas  
GMP

\$936,665

## Receiving Schools Upgrades &

### Kitchen Improvements

### Kitchen Improvements



Permit

**Kendallvue ES**  
**H&M GC GTC**

Bid w/ E&FR



93rd

Permit Applied 3/12/23

**Fremont ES**

(Wilmore Davis Re-design)

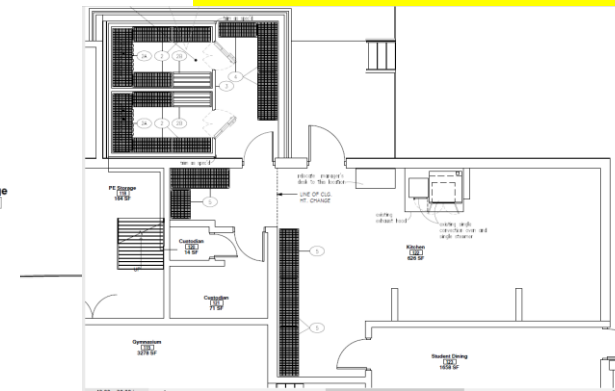
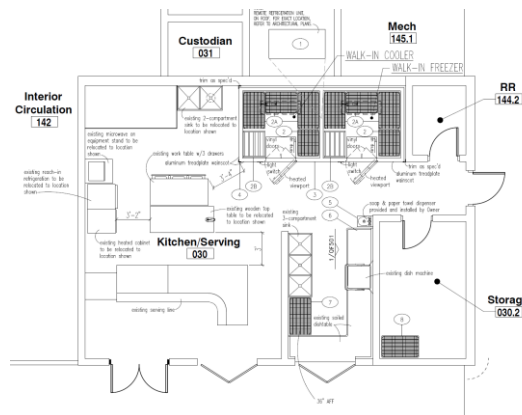
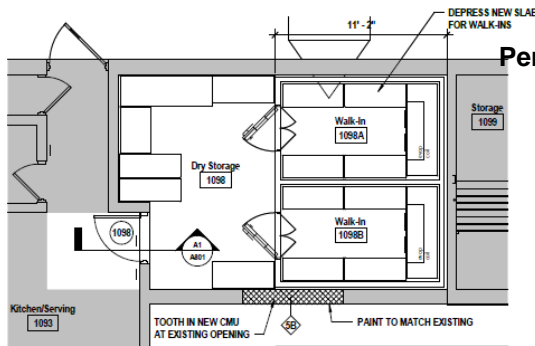


95th

Permit Applied 3/28/23

**Lukas ES**

**Eidos - CMGC Mark Young**





# School Closings & Consolidations

Resolution: Board of Education Decision on Staff  
Recommendation Regional Opportunities for Thriving Schools  
Thursday, November 10, 2022

Construction

GMP 3/29/23

\$4,347,707

## DW – Receiving Schools Upgrades Bundle #1 A/E RB+B – CMGC HPM

~~Foothills, Vanderhoof, Green Gables, Hutchinson, Maple Grove,  
Powderhorn, Ryan, Secrest, Semper, Slater, Slater Back 2/6, Fremont,  
Wheat Ridge, Standley Lake, Adams, Meiklejohn~~

### 9 Week Construction Schedule

Identify preschool options  
based on an articulated  
strategy for district-wide  
preschool as part of  
students' PK-12  
educational experience;



Permit Applied 3/28/23



# School Closings & Consolidations

Resolution: Board of Education Decision on Staff  
Recommendation Regional Opportunities for Thriving Schools  
Thursday, November 10, 2022

GMP 4/3/23

Weber  
\$2,869,179

9 Week Construction Schedule

## DW – Receiving Schools Upgrades Bundle #2 A/E MOA – CMGC Saunders

### Weber ES

Identify preschool options  
based on an articulated  
strategy for district-wide  
preschool as part of  
students' PK-12  
educational experience;



Permit Applied 3/13/23



5/11/23 BOE Agenda

# Healthy & Equitable Start Times

Start Times Next Steps

BOE Mar 03 2022

GMP 3/30/23

\$7,067,897

## (16) High School Athletic Fields - Lighting

Engineer Ackerman – CMGC Himmelman

Address challenges related to athletics and activities.



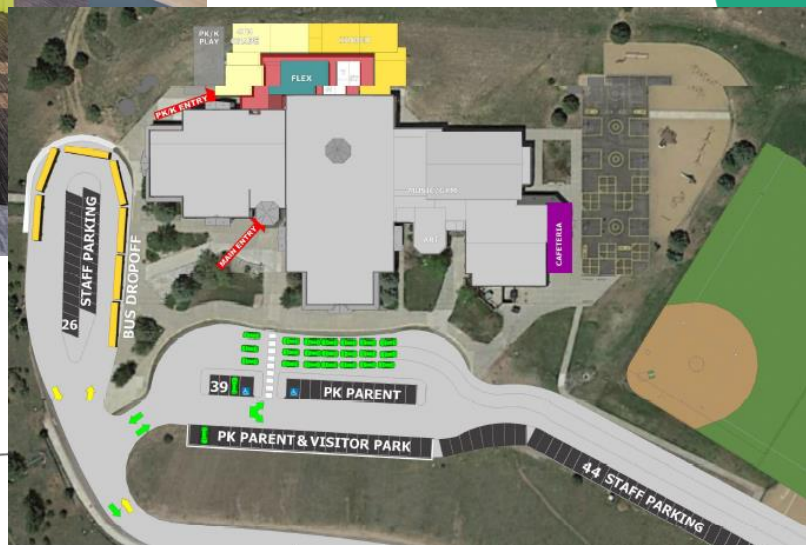
Alameda International High School  
Arvada High School  
Arvada West High School  
Bear Creek High School  
Chatfield High School  
Columbine High School  
Dakota Ridge Senior High School  
D'Evelyn Junior/Senior High School  
Golden High School  
Green Mountain High School  
Jefferson High School  
Lakewood High School  
Pomona High School  
Ralston Valley Senior High School  
Standley Lake High School  
Wheat Ridge High School

# School Closings & Consolidations

Resolution: Board of Education Decision on Staff  
Recommendation Regional Opportunities for Thriving Schools  
Thursday, November 10, 2022

DD

## Bergen Valley ES - EUA & GC TBD



Effective July 1, 2024, Bergen Meadow K-2 will close and the grade configuration of Bergen Valley will be converted to a PK-5.

# 2024 Bond Projects

Location	Description	Construction Budget
West Lakewood	New School Morrison	\$ 22,402,800.00
Leyden Rock	New School Golden	\$ 21,336,000.00
Fairmount	Efficiency & Future Ready (Roofing, Flooring, Playground Complete) (HVAC Design Complete)	\$ 1,292,181.00
McLain High School	Efficiency & Future Ready	\$ 605,816.00
Rooney Ranch	Efficiency & Future Ready (Flooring, LED Complete)	\$ 141,623.00
Bradford North	Efficiency & Future Ready (Flooring, Paving, LED Complete)	\$ 226,594.00
Bradford South	Efficiency & Future Ready (Flooring, HVAC, LED Complete)	\$ 169,351.00
Leawood	Efficiency & Future Ready (Led Complete)	\$ 684,210.00
Normandy	Efficiency & Future Ready (Playground LED Complete)	\$ 1,044,213.00
Coal Creek K8	Efficiency & Future Ready	\$ 788,966.00
Moore MS	Late Summer Bid Efficiency & Future Ready	\$ 925,804.00
Warren Tech Central	Efficiency & Future Ready -	\$ 2,492,054.00
Meiklejohn	Efficiency & Future Ready (LED Complete)	\$ 200,705.00
West Woods	Efficiency & Future Ready (flooring LED Complete) HVAC design 99% complete)	\$ 2,672,666.00
Drake Middle	Efficiency & Future Ready	\$ 658,174.00
Free Horizon	Efficiency & Future Ready (Secure Entry Remains)	\$ 175,000.00

Plus FF&E Projects



# Next Meeting 5/18/23